



SPRING 2022

THE HUB

GARDEN CITY & HOLCOMB, KANSAS



Jason Hase



Holli Ayala



Holli Ayala



Holli Ayala

*Front Cover by Jake Thompson.

CONTENTS

- 2 Shopping
- 4 SageHouse Bath & Body
- 5 Southwest Kansas Hunting
- 6 Explore Nature
- 8 News from the Zoo
- 9 Kids Corner
- 10 The Arts
- 12 Water Fun
- 14 Golf
- 16 Get into the Action
- 18 True Crime Exhibit
- 19 Finney County Historical Museum
- 20 Historical Sites
- 22 The El Zarape Family Legacy
- 23 Annual Events
- 26 Upcoming Events
- 28 Lodging
- 32 Local Restaurants
- 36 Getting Around Garden City

Welcome

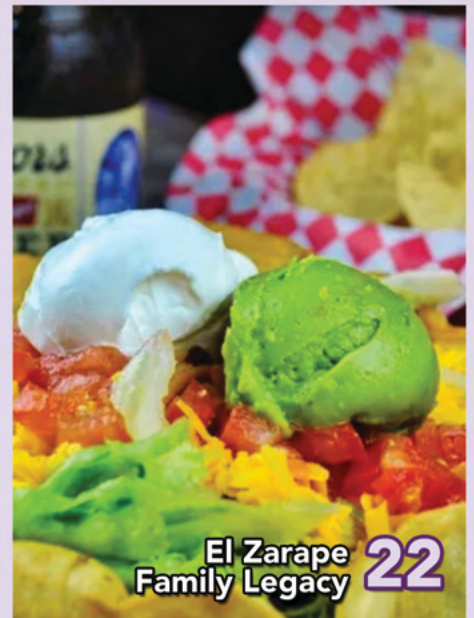


We are excited to highlight just a small sampling of what you can expect when you visit the cities of Garden City and Holcomb. Our hope is that you will be adventurous as you delve deeper into the rich history that built this amazing oasis on the plains of Southwest Kansas. Our promise to you is to be ready to answer any question you may have and to assist you to the best of our ability in finding the experience you are looking for in Finney County.

We hope to see you soon!

Roxanne Lansink

Finney County Convention and Tourism Director



14 Golf

El Zarape Family Legacy 22

Downtown SHOPPING

Garden City's Historical Downtown is the perfect place to shop 'til you drop! You can spend the whole day exploring all the shops and restaurants that downtown has to offer. Start your day by grabbing a coffee at Patrick Dugan's Coffee House or if you would like a healthy alternative head over to Roots Juice Co. & Wellness Studio for a delicious juice or smoothie. Then, stop by Corner on Main to shop for that perfect gift for someone special. SageHouse Bath & Body offers handmade bath and body products to make your next self-care day extra relaxing. Make sure to end your day trying one of downtown's many tasty eateries. There is something to fit everyone's appetite.

Along with so many great places to shop and eat, Historical Downtown has a beautiful park that holds numerous events throughout the year. At Stevens Park you'll find events like the Summer Concert Series, Food Truck Fridays, Art-in-the-Park, Beef Empire Days Celebration, band performances and more. The beautiful three-acre park is the place to get in on all the fun! With everything that the Historical Downtown has to offer, it is no wonder it is known as the "Heart of Garden City."

For more information about Downtown Garden City or a list of retailers, visit gcdowntown.com.





SCHULMAN

Crossing

Schulman Crossing Shopping Center has something to keep your whole family satisfied! It features delicious restaurants, numerous clothing stores, charming specialty boutiques and so much more. In 2013, Schulman Crossing broke ground along the U.S. Highway 83/50 Bypass at Schulman Avenue starting with Menards. Cato Fashion, Petco, T.J. Maxx, Dick's Sporting Goods, Hobby Lobby, Ross Dress For Less, Bling and Ulta Beauty opened in 2014. Dollar Tree, Buffalo Wild Wings and Rib Crib soon followed in 2015. The shopping center continues to grow with new shops opening yearly with the newest editions being Five Below and The Buckle. Construction is almost complete for Old Navy to join the shops at Schulman Crossing Shopping Center.

For some, shopping is a fun excursion during a trip. For others, shopping is the reason for the trip! No matter where you fall on that spectrum, Schulman Crossing Shopping Center has you covered.





SAGEHOUSE BATH & BODY

For Jessica Gallardo, finding bath and body products was always a struggle. Due to her sensitive skin, as well as eczema, most products would make it worse or literally hurt to use. After years of irritating skin issues and frustrations with commercially made product, she started making soaps out of her home in 2015 after watching a YouTube video. Jessica made small batches that she would give to friends and family. Her soaps were a huge hit and soon she was being asked to make more products, so in August of 2017, SageHouse Soaps was born.

Walking into her store you can smell all the wonderful fragrances of the soaps and lotions. Over the years she has added many new products. Jessica is always on the lookout for new things she can hand make for her customers. Her products are produced right in the store with only the finest ingredients available. Jessica has now introduced ionized footbaths that help draw out toxins and help with relaxation. This process starts by placing your feet into a specialized tub equipped with the IonCleanse technology. The electrical frequencies will then enter the water and start to pull the heavy metal toxins from your body (most common being mercury, cadmium, aluminum and lead), which will cause the water to change colors. Jessica's goal is to eventually have many spa services available.

With so many scents to choose from it is easy to spend hours in Sagehouse Bath and Body smelling all the different products. If for some reason you do not find what you are looking for, Jessica will gladly create a perfect signature fragrance just for you. Taking care

of her customers is one of Jessica's greatest characteristics. The best part of Sagehouse Bath and Body is you can order online and have a little bit of Garden City delivered to your doorstep! Trust us on this, once you visit Sagehouse Bath and Body you will never go back to store brand products again. On your next trip to Garden City, make sure to visit SageHouse Bath & Body at 312 N Main Street or visit them online at sagehousebathnbody.com!



HUNTING

in Southwest Kansas



From corner to corner, Kansas hunting opportunities seem nearly limitless. Kansas is home to some of the most extensive public hunting lands in the country. We have over 1,300,000 acres of public and private lands that are open to seasonal hunters. Arguably, some of the best are right here in Southwest Kansas, with a vast array of habitats, and a variety of different game species. Our hunting outfitters are also ready to help, whether you're a seasoned pro, or someone wanting to learn how to hunt.

Our hunting culture and heritage runs deep, but you don't have to be a local to participate. In fact, we've become known as one of the largest travel hunter destinations, hosting hunters from around the world. Discover why more hunting enthusiasts are choosing Garden City as their base camp destination, and why you should too!

Rooster Roundup

During hunting season, 600 pheasants will be banded and released in Southwest Kansas. If you are lucky enough to bag one of the banded pheasants, bring your leg band to one of the approved locations to register your leg band and claim your prize! For more information go to visitgck.com.

Download the official Kansas Department of Wildlife Hunting License App



GET IT ON Google Play

Download on the App Store



SCAN ME

HUNTING GUIDE

Riverside Ranch Outfitters
2013 Pioneer Road
Garden City, Kansas 67846
(806) 206-9910

TAXIDERMY

King Taxidermy
10505 6th Road
Ingalls, Ks. 67853
www.kingtaxidermy.com
(620) 335-5424

Great Plains Taxidermy
218 J E Humphreys Street
Ashland, Ks. 67831
(620) 635-4423

GUN DEALERS

AAA Pawn Shop
132 W. Kansas Ave
(620) 276-4000

Postrock Trading Company
1203 N Taylor Ave
(620) 276-8171

Walmart Supercenter
3101 E Kansas Ave
(620) 275-0775

Wooden Nickel Pawn Shop
1302 Taylor Plaza E
(620) 276-6074

Working Man's Guns
1106 McCoy Dr
(620) 272-0803



EXPLORE NATURE

Explore nature in beautiful Finney County! Finney County has so many fun and interesting things to do that will either take you straight into nature or help you learn more about how our planet works and how we can preserve it. Whether you are traversing the grounds of Lee Richardson Zoo, learning about conservation, or checking out the majestic bison at the Sandsage Bison Range, there is something for everyone at any age. Here are just a few places in Finney that will get you outdoors!



LEE RICHARDSON ZOO

Lee Richardson Zoo sits on 50 beautiful acres, and is truly the jewel of Garden City. Here you can enjoy lush landscapes, lovely walking and driving paths, playgrounds, picnic areas, and of course, hundreds of exotic and local species of animals. Whether you're touring Garden City with family, friends, or solo, the zoo is a wonderful place to spend the day. Open year-round and free to pedestrians, visitors are able to experience giraffes, lions, bears, primates, birds, and many more animals, native and exotic, at a gorgeous facility accredited by the Association of Zoos and Aquariums. Be sure to visit the Safari Shop while at the zoo for a memorable souvenir. The zoo is free to walk through, while visitors viewing the zoo by car pay a nominal admission.

For more information, call (620) 276-1250 or go to leerichardsonzoo.org.



FINNUP CENTER FOR CONSERVATION EDUCATION

This center is a state-of-the-art facility. The Finnup Center consists of two classrooms, one large meeting room/auditorium, interactive television studio, and interactive learning stations introducing the wonders of nature to over 15,000 students of all ages annually. Bring your group and enjoy the wonders of nature.

For more information, call (620) 276-1250 or visit leerichardsonzoo.org/finnupcenter.php.



NATURE EXPLORE CLASSROOM

Garden City's own Nature Explore Classroom is in a secure area just outside the Finney County Library. There, kids will find The Grassy Knoll, The Gathering Tree, Home of the Gnome, River Ramble, Sunflower House, Mulch Gulch, Secret Path, Dream Building, Melody Meadow, and Art Island. Each of these places provides a unique opportunity for a child to pursue a specific type of activity, encouraged by colorful signs and natural objects.

For more information, call (620) 272-3680.



SANDSAGE BISON RANGE

Located in the sandsage prairie, the bison remains one of the few tracts of native sandsage prairie not converted to irrigated cropland. The presence of several tall grass species and sand sagebrush makes this southern plains ecosystem truly unique. Sandsage Bison Range is home to the oldest publicly owned bison herd in Kansas. Interesting critters that also call the sandsage prairie home include the lesser prairie chicken, spotted ground squirrel, kangaroo rat and mule deer. Reservations are required for tours to see the buffalo and other animals on the sagebrush prairie and wildflower tours.

For more information, call (620) 276-8886.





NEWS FROM



Lee Richardson Zoo has been home to Ember, a red panda, for over 10 years. Ember has two cubs, CJ and Lottie that were born in August of 2020. Since then, they spend their time lounging in trees and entertaining zoo goers with their antics.

Superb climbers, red pandas can descend trees head first like a squirrel thanks to a special rotating ankle joint. Red pandas can jump five feet from branch to branch, but avoid doing so if they can climb to where they are going. This endangered species is known for their bright red fur and is native to the cooler climates of the forests and shrub-land of Bhutan, China, India, Myanmar & Nepal. Cooler mornings and evenings during the summer months are the best times of day to visit the red pandas.



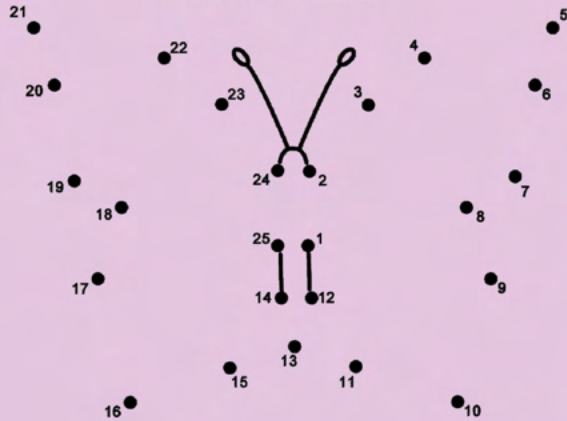
Red pandas are listed as Endangered by the IUCN (International Union for Conservation of Nature) primarily due to the destruction of their habitat for human use (logging, farming, firewood, etc.). There has also been an increase in poaching and trafficking for the pet trade. The global red panda population is in decline. It is estimated that there are less than 10,000 remaining in the wild and there may be as few as 2,500. Due to this regional captive breeding programs for the red panda have been established in zoos around the world. Be sure to stop by Wild Asia to say "hi" to Shanu, CJ and of course mama Ember!

To learn more about red pandas, please visit leerichardsonzoo.org.



Kids Corner

CONNECT THE DOTS



B	I	B	I	R	D	S	V	U	Z	E	P	T	O	G	C	C	F	O	Q
E	O	D	Z	Z	Z	E	O	M	Z	I	A	B	Q	O	T	H	S	T	Q
B	H	W	E	W	F	A	N	L	A	B	C	Q	L	Y	E	F	I	I	B
J	E	K	A	Y	I	S	S	S	P	R	I	N	G	O	N	B	Q	C	U
R	C	E	I	E	U	T	E	F	E	W	C	W	T	P	S	X	A	O	K
L	W	E	S	T	J	E	E	S	U	N	S	H	I	N	E	S	R	L	B
T	B	R	M	T	E	R	D	Y	Q	T	U	L	I	P	G	Y	O	B	U
E	G	G	S	J	Z	S	S	H	X	N	N	P	G	W	O	O	I	M	T
U	Q	Z	E	E	G	A	R	D	E	N	X	C	I	N	S	J	R	F	T
S	M	P	E	B	J	K	M	Z	X	X	V	P	L	K	L	V	U	Q	E
P	I	C	N	I	C	Z	Q	M	M	C	S	E	A	S	O	N	R	D	R
F	N	E	S	T	U	M	A	H	U	M	A	F	L	O	W	E	R	S	F
D	W	A	R	M	R	A	I	N	B	O	W	Q	U	W	Z	I	D	T	L
O	A	C	Z	S	L	Y	O	S	K	A	I	K	W	B	U	N	N	Y	Y
G	W	F	E	J	G	R	E	E	N	Q	V	V	F	D	M	R	J	Q	E
G	Q	Y	H	F	M	O	A	P	R	I	L	D	W	E	X	G	I	R	Z

NEST
MAY
BEES
MARCH
CHICK
FLOWERS

SEASON
SUNSHINE
GREEN
PICNIC
WARM
TULIP

BUNNY
BLOSSOM
RAINBOW
SEEDS
GARDEN
APRIL

KITES
BUTTERFLY
EGGS
EASTER
BIRDS
SPRING



The Arts

GARDEN CITY ARTS

Garden City Arts is a local, non-profit arts organization showcasing a variety of mesmerizing exhibits. It is an exceptional place to peruse captivating collections, and support local Kansas artists. Since its founding in 1989, Garden City Arts has strived to bring more arts and humanities events to Southwest Kansas.

Garden City Arts offers an intriguing array of fine art, photography, textile and other revolving art exhibits for all tastes. In addition, the center conducts art classes for all ages and has a delightful gift gallery, featuring one-of-a-kind art and jewelry.

View their calendar of events for all of their in-person and virtual exhibits and family-friendly activities. From watercolor workshops to Art in the Park, the crew at Garden City Arts is always planning exciting cultural events.

Garden City Arts is located at 318 North Main Street in Garden City. The gallery is open Tuesdays through Saturdays from 1 pm until 5 pm. General admission is free.

For more information about Garden City Arts, please call (620) 260-9700 or visit gardencityarts.org.



BOY SCOUTS OF AMERICA JESSIE MONTES ART GALLERY

In 1990, Jessie Montes began producing three dimensional sculptures, landscapes, portraits and abstract design pieces using quarter inch strips of cardboard glued edgewise on a cardboard base. Acrylic paint is used on most of his pieces, providing vibrant, exciting art. In 2017, Duane and Orvleta West gifted their 53 piece collection of Jessie Montes art to the Sante Fe Trail Council. The gallery is open Monday - Friday, 9am to 5pm, and is located at 402 Fulton Street in Garden City.

For more information, call 620-275-5162.

MERCER GALLERY

The Mercer Gallery at Garden City Community College is committed to offering a rich and diverse cultural experience to the campus community as well as to the greater region. The Mercer Gallery offers people a transformative opportunity to experience life as depicted by regional, national, and international artists. It is their goal to provide exhibitions which are inclusive of a variety of media and concepts. They provide exhibitions that will enhance lifelong experiences.

Located in the west wing of the Joyce Fine Arts building, at 801 Campus Drive in Garden City, the Mercer Gallery is open Monday - Wednesday from 9am to 4pm, Thursdays from 9am to 10pm, and Fridays from 9am to 3pm during the regular academic year (closed Summer term and other breaks). Admission is free.

For more information, call 620-276-9644.





WATER FUN FOR THE WHOLE FAMILY



Parrot Cove Water Park is a 36,000 square foot paradise, with four water slides, a tropical lagoon, a lazy river, a rock-climbing wall, a gamers' palace, and much more. Heated to a comfortable 84 degrees and featuring a 40-foot Riptide Rush and a Screamin' Tsunami, exciting adventures await for the whole family. For those in search of something more laid back, the Key Lime Creek lets you drift more than 500 feet around the whole of Parrot Cove.

Show off your gaming skills in the big game room where you'll find old-time classics as well as some more modern challenges to keep you guessing. Enjoy the luxury of playing without the need to fumble with coins and dollar bills by loading your game card. They are open to the public on Fridays, Saturdays and Sundays.

There's nothing like hours of water adventures to work up an appetite. Luckily, Parrot Cove Water Park has the answer with its Snack Shack. They have bagged chips, individually-packaged

pastries, slushies, bottled drinks, hot dogs, nachos and other snacktime favorites. Parrot Cove also has a dedicated snacking area that oversees the water park so parents can keep an eye on things at all times.

For more information, go to swimatparrotcove.com or call (620) 805-5303.





GARDEN RAPIDS AT THE BIG POOL WATER PARK

Garden Rapids at the Big Pool built in 2021 includes a competition pool, zero depth entry, a lazy river, slides, a leisure pool, a Splashtacular stand-up-slide, and fly high slide! The ICONIC elephant slide that was part of the world famous “Big Pool” has a new home!! You are now able to slide down memory lane before visiting the Garden Rapids facility and during the off-season! Each feature at Garden Rapids is animal-themed, like their neighbors at Lee Richardson Zoo. You can hang out at Lion Lounge or float down Otter Rapids, the lazy river, or try out Dolphin Dive. Garden Rapids has your whole family covered for fun under the sun!

For more information, call (620) 276-1160.

Daily Rate - \$3

Open During Season:

Monday - Saturday 1pm to 8pm

Sunday 1pm to 6pm



SONNIE BAIRD SWIMMING POOL

The Sonnie Baird Swimming Pool is named after Sonnie Baird, the former director of Holcomb Recreation who retired in 2007. In 1979, Baird started her career in Holcomb and was a tremendous asset for the community throughout her 27 years of service. The pool features plenty of lounge chairs, a thrilling slide, a snack bar, and a kiddie pool. Plenty of fun in the sun for the whole family.

For more information, call (620) 277-2610.

Daily Rate - \$2 (rates apply to all persons - swimmers & non swimmers)

June Pool Hours:

Monday - Thursday 1pm to 6pm

Friday - Sunday 1pm to 5:30pm

July & August Pool Hours:

Monday - Thursday 2pm to 6pm

Friday - Sunday 2pm to 5:30pm

4pm break/whistle:

If the attendance is at 20 patrons or less the pool will close for the day.





BUFFALO DUNES GOLF COURSE

Buffalo Dunes Golf Course is ranked one of the top ten municipal golf courses in the United States. It has been recognized by Golf Magazine and Travel & Leisure Magazine as places to play and best bangs for the buck. Challenging, enjoyable and affordable, Buffalo Dunes will give you a little bit of a Scottish feel as it is nestled among the historic sand hills six miles south of Garden City. Southwest Kansas offers a four season climate and golf can be played throughout the year, weather permitting. Buffalo Dunes is the host course to the prestigious Garden City Charity Classic, a Symetra Tour event. Among the golfing greats who have walked the fairways of the dunes are U.S. Open champions Steve Jones and Lee Janzen, and British Open champions Tom Weiskopf and Stewart Cink.

For more information about the course, go to buffalodunes.org.

GOLF COURSE AT SOUTHWIND

There's a reason for the name at Southwind Country Club. The course was opened in 1980 with one overriding factor in mind. In Southwest Kansas the wind blows from the south often and hard. Taking that into account, the course was laid out in the rolling sand hills south of Garden City to take advantage of that and it worked! Southwind has become a favorite amongst touring golf professionals.

For more information about the course, go to southwind-gc.com.



The Epson Tour (formerly the Symetra Tour) is the official qualifying tour of the LPGA Tour and enters its 42nd competitive season in 2022. With the support of the entitlement partner Epson, the Tour's mission is to prepare the world's best female professional golfers for a successful career on the LPGA Tour. In the last decade, the Epson Tour has grown from 15 tournaments and \$1.6 million in prize money to over \$4 million awarded across 20+ events in 2022. With more than 600 graduates and alumnae moving on to the LPGA Tour, former Epson Tour players have won 458 LPGA titles.

The Epson Tour schedule runs from March through September and has more than 300 players competing from around the world. The top 10 players from the LPGA Futures Tour money list earn LPGA membership for the following year.

The Garden City Charity Classic is the Regions only professional ladies golf tournament. Lady golfers from around the world gather in Garden City to battle for the right to earn their LPGA card. The Tournament locally facilitates ladies high school's golf programs in the 22 counties of Southwest Kansas. The Tournament is in its 8th year and has hosted the only back-to-back tournament in the history of the Tour. Several countries and all 50 states have participated in the Garden City Charity Classic!

For more information or to volunteer, call (620) 276- 0607.



The Southwest Kansas Pro-Am is the longest running professional golf tournament in the State of Kansas. The Southwest Kansas Pro-Am began in 1979 as a traveling tournament. Each year it was held at Dodge City, Liberal, or Garden City, Kansas until it was decided the two beautiful renowned golf courses in Garden City should be the permanent home of the Pro-Am. Two of Kansas' premier golf courses, The Golf Club at Southwind and Buffalo Dunes, play host to this event.

The Southwest Kansas Pro-Am Golf Tournament benefits the Newborn Intensive Care Unit at St. Catherine Hospital in Garden City. These funds provide necessary dollars to maintain the high level of care and education required for the Level II, seven bed NICU department.

For more information, go to swksproam.com.



GET INTO THE ACTION

Ready. Set. Go! If you are looking for activities that are full of action and fun for the whole family, Finney County has you covered! From racing and paintball to escape rooms and music, we have it all.

AIRPORT RACEWAY

During warm summer nights, the Airport Raceway is a popular destination for the whole family. Ten miles east of Garden City, the Airport Raceway holds weekly events for the racing community. The 1/6-mile raceway is home to Dwarf and Midget car races. The short inner track is for go-karts and junior sprint cars. It is sure to get your heart racing whether you are a driver or an enthusiast in the stands.

For more information, visit airport-raceway.com.





ESCAPE THE CLOCK

Imagine entering Alice in Wonderland. Everything looks fine until you realize the rabbit hole is closing. Now, you and your friends need to figure out how to escape before time runs out. You aren't sure what's going to happen if you don't, but you also don't want to stick around to find out. The clues you need to escape are right in front of you, you just need to look very, very carefully...Will you escape or be trapped in Wonderland forever?!? Garden City's Escape the Clock offers five rooms, right on Main Street! It is easy to reserve a space and reservations can be made online. Escape the Clock offers special pricing for professional team building and large parties.

For pricing, scheduling, and room descriptions, call (620) 805-5064 or visit escapetheclockgc.com.



FLAT MOUNTAIN BREWHOUSE

Flat Mountain Brewhouse is Garden City's first and only brewery. Established in 2019, they are a family friendly establishment that specializes in making unique craft beers for a unique community. With live music, comedy shows and open mic nights you will be entertained while experiencing "The Little Brewhouse on the Prairie!" Flat Mountain Brewhouse has 12 rotating taps and a killer food menu. The historic style brewery offers you the feel of having great beer in an upscale environment, without the upscale prices!

For more information about upcoming events, call (620) 260-2886 or go to flatmountainbrewhouse.com.



SAINTS OF FUN

Saints of Fun Paintball is the place to go for an unforgettable day of fun with friends and family. They provide fun for all ages with paintball, laser tag and zorb balls. All equipment is provided, including paintballs, field entry, air (HPA), gun rental and mask. Laser tag is similar to paintball but allows for unlimited ammo and does not require a facemask. Zorb Balls can be rented from Saints of Fun for a day of non-stop entertainment.

For more information, call (620) 521-7889 or visit saintsoffun.com.



True Crime

Solving Notorious Cases from Finney County's History

The True Crime Exhibit at the Finney County Historical Museum is a riveting true crime exhibit that incorporates evidence, artifacts and information showing how local and area law enforcement officers solved the crime spree of the Fleagle Gang, bank robbers and murderers of the 1920s who were once as widely known as Baby Face Nelson, John Dillinger, Bonnie Parker and Clyde Barrow. The exhibit also educates visitors about the infamous 1959 Clutter murder case, which inspired author Truman Capote to produce the acclaimed novel, "In Cold Blood," about the deaths of the Herb and Bonnie Clutter family at the hands of prison parolees Richard Hickock and Perry Smith.

This exhibit showcases forensic evidence from the both cases that was used in obtaining convictions that led to the execution of the perpetrators. The incriminating evidence in the exhibit includes a boot worn by Smith the night of the Clutter murders, which left a print linking Hickock and the wearer to the killings; and car window glass on which gangster

Jake Fleagle left his finger print in the commission of a murder after robbing the First National Bank in Lamar, Colorado. That print, one of the first used in an FBI-related investigation, linked Jake and Ralph Fleagle, as well as accomplices George Abshier and Howard "Heavy" Royston, to the fatal heist.

Additional items were added in 2020 and include the judicial robe and chair used by Judge Roland Tate in the Clutter case, and eight guns wielded by the Fleagle Gang in their decade of robberies and murders. In all, the exhibit includes more than 20 additional artifacts and approximately three dozen historic photographs.

"True Crime – Solving Notorious Cases from Finney County's History," opened in 2018 and is one of more than a dozen exhibits in three galleries of the museum. You don't want to miss this intriguing exhibit.

For information, contact the Finney County Historical Museum at (620) 272-3664.





Finney County Historical Museum



History lurks around every corner in Finney County, Kansas and the Finney County Historical Museum is THE place to learn about Garden City and Holcomb's cultural past. While walking through the halls, you'll be immersed back in time to the days of

the Fulton Brothers and icon CJ Buffalo Jones, a co-founder of Garden City and buffalo breeder. Learn all about the Spirit of the Plains and how Finney County got started and has thrived.

There are so many diverse and interesting exhibits at the Finney County Historical Museum. Become a part of history by dressing up in historic clothes at a mock up of the Windsor Hotel like in its glory days. You will also find the world's largest hairball found in a cow's stomach. The museum presents various long-term and temporary exhibitions that draw a huge variety of visitors curious about the social, cultural and natural history of Southwest Kansas.

The museum also includes the historic William D. and Luticia Fulton House, dating back to 1884. The Fulton House, home of town founders, William D. and Luticia Fulton, is one of the few remaining houses from the earliest days of Garden City. Built in 1884, William and Lettie's last home is a delightful one-half story national folk style house surrounded by charming flower gardens. The living room and dining room have been restored and furnished with period furniture and accessories to make you feel like you've stepped back in time. Make sure not to miss the front parlor houses and an informative exhibit about early Garden City and the four founding families.

One of the finest examples in Kansas of a one-room schoolhouse, the 19th Century Pleasant Valley School was moved to Finnap Park in Garden City in the 1970s and is now located near the museum. Built in the 1890s, it served as a social center as well as a school for many decades.

If you want to dig even deeper into Finney County's or your own family history, Finney County Historical Museum is home to the Leola Howard Blanchard Research Library. The research library is an excellent research center and offers primary sources for the history of Finney County and assistance with family genealogy. The library contains a large photograph collection, archives and manuscript material, original newspapers, maps and microfilm of early day publications.

After browsing the over 100,000 artifacts the museum has to offer, make sure to stop by the unique gift shop for your Garden City, Kansas souvenir. Additionally, the museum sponsors numerous events throughout the year and operates a fast-growing education outreach program. There is a meeting room available for public booking.

For more information, call (620) 272-3664, check out Facebook or visit finneycounty.org.

Winter Hours: Monday - Sunday 1pm - 5pm

Summer Hours:

Monday - Saturday 10am - 5pm & Sunday 1pm - 5pm

Admission: FREE

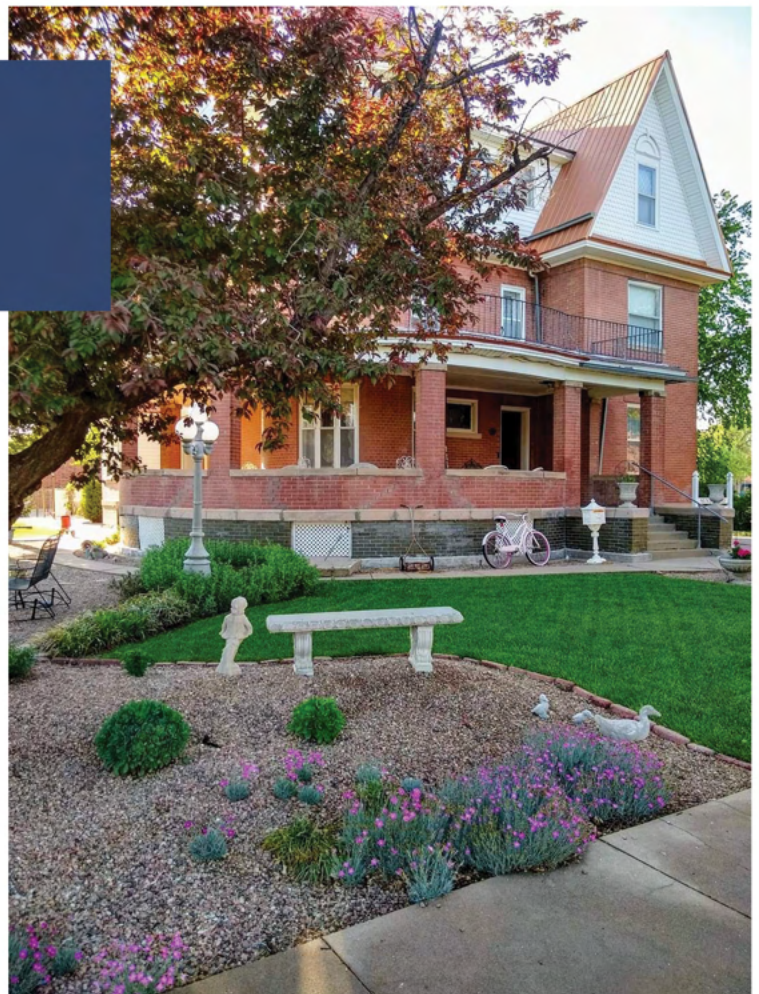
HISTORIC SITES

From Native American roots to buffalo hunters and war veterans, Finney County is a diverse melting pot of immigrants. No matter the reason for your visit to the area, take some time to learn about Finney County's rich and storied past. Here are a few of the must see historic sites around the area!

FULTON HOUSE

The William D. Fulton family moved into this house from their homestead in September of 1884. William and his brother, James, were the first to file on land in (Sequoyah) Finney County in 1879. Located south of the museum, the home was relocated in 2004 from its original location at 404 North 7th. The restored Folk Victorian home is surrounded by period correct floral gardens and filled with period correct furnishings.

Free guided tours are available by calling (620) 272-3664.



SUNNYLAND BED AND BREAKFAST

Sunnyland was the three-story retirement home of David R. and Maretta Menke from 1909 until they sold the property in 1917 to retire in California. David Menke was born in Pittsburg, Pennsylvania in 1948 and married Maretta Urie in 1869. With three small children, Mr. and Mrs. Menke started for western Kansas in early summer of 1878 and arrived in Garden City on August 20, 1878. He opened the first store, was the first postmaster and was also County Treasurer. Sunnyland is a 1909, Queen Anne style, three-story brick home. With its wraparound porch, original woodwork and fireplaces, period furnishings, open stairway and third level ballroom, Sunnyland is a must see masterpiece.

For tour information or to make a reservation, call (620) 276-0500.

To learn more about our historic treasures, please go to visitgck.com.



WINDSOR HOTEL

Constructed in 1888 by John A. Stevens, this four-story hotel was among the first buildings built in Garden City. Construction began in March 1887 ending in the spring of the following year. The project cost Stevens nearly \$100,000 and the hotel was built using local materials. The hotel has 125 rooms and even had an access connecting it to the Stevens Opera House which was also built by John Stevens. Nicknamed the "Waldorf of the Prairie", the hotel was reputed to be the largest between Denver and Kansas City. In 1972, the Windsor Hotel was added to the National Register of Historic Places by the US National Park Service. The Windsor closed in early 1977, but you can still see it by booking a tour. Tours are available in the summer months.

For more information about tours, email fcpa.ks@gmail.com.





EL ZARAPE MEXICAN RESTAURANT

2501 East Fulton • (620) 275-8181 • elzarapecg.com



Miguel & Alin Rodriguez



Phyllis & Manual Garcia, Sr.

If you talk to any of the locals, they will tell you that it's essential you try El Zarape when you are in Garden City, Kansas. Phyllis and Manuel Garcia, Sr. founded El Zarape Mexican Restaurant in 1967 (50 plus years ago) and it was the first Mexican food restaurant in Garden City. Phyllis Garcia was determined to make her life-long dream a reality. She wanted to open a restaurant that showed her deep love for traditional Mexican food that is fresh, healthy and authentic. With no formal education, business experience or financing, she rounded up pots and pans from home and established her own commercial kitchen. With that in place, Phyllis and her husband opened the doors to the original El Zarape Mexican Restaurant.

Although Mexican cuisine was relatively unknown to Western Kansas in the 60s, Phyllis's instincts told her that people from surrounding areas would come. Along

with her eldest daughter, Lupe, and other family members, they began what was to become a family legacy. Whether it is in the kitchen cooking or prepping, washing dishes, busing or waiting tables, most of her ten children and grandchildren, and now great-children, have taken a turn in the business. Although you can no longer enjoy a meal cooked in Phyllis's very own pots and pans, you can continue to savor the tradition that she held so dear to her heart.

Today, Miguel and Alin Rodriguez, great-grandchildren of Phyllis and Manual, along with other family members, continue the succession of the El Zarape legacy. Some of the dishes they are known for include the Pablito, Gordita and the Monterrey Special. In an effort to share a little taste of El Zarape with the rest of the world, Phyllis's salsa recipe is now distributed throughout the U.S in regional grocery stores and online. To experience the incredible fresh salsa, come in to El Zarape Mexican Restaurant at 2501 East Fulton in Garden City or order a jar online at elzarapecg.com!





ANNUAL EVENTS

For a list of all upcoming events, check out Annual Events at visitgck.com

MARCH

ANTIQUe APPRAISAL FAIR

This is a live, all-day event, styled like the Antiques Road Show television program, during which participants bring heirloom items to be evaluated on stage by a panel of antique dealers and other experts. The event raises funds for the Finney County Museum, while providing history related information and entertainment for participants, spectators, and collectors.

For more information, contact Steve Quakenbush at (620) 272-3664.

APRIL

GARDEN CITY CHARITY CLASSIC

Watch the top 144 pro women golfers from all over the world compete on this leg of the Symetra Tour where the top ten will earn their LPGA cards.

For more information, contact Jason Hase at Buffalo Dunes (620) 276-1210.

MAY - JUNE

BEEF EMPIRE DAYS

Beef Empire Days is an eleven day celebration, educating the community about the beef industry. Parades, parties and tastings in the park add to the enjoyment of the week.

For a schedule of events, visit beefempiredays.com or call (620) 275-6807 for more information.



JUNE

SOUTHWEST KANSAS PRO-AM

For over 35 years, Garden City has been the host for Kansas' longest running professional golf tournament, The Southwest Kansas Pro-Am. Lasting almost a week, the Pro-Am consists of many different events along with the main tournament, proving that there is something for everyone.

For more information, contact Paige Kraus at (620) 272-2177.

JULY

ANNUAL FLEA MARKET FESTIVALS OF ANTIQUES, COLLECTIBLES, ARTS & CRAFTS

This is an outdoor festival of antiques, collectibles, arts, crafts, and food, drawing with vendors from multiple communities to offer goods to a crowd of shoppers from much of Kansas, plus two neighboring states.

For more information, contact Steve Quakenbush at (620) 272-3664.



AUGUST

TUMBLEWEED FESTIVAL

The festival features professional groups playing jazz, rock, Latino, South African, Caribbean, Zydeco, folk, bluegrass, and a Capella. It hosts local and regional musicians as well as a stage and huge tent devoted to children's entertainment and art.

For more information, visit the festival website at tumbleweedfestival.com. You can also visit their Facebook page at facebook.com/tumbleweedfestival/.





SEPTEMBER

GARDEN CITY COMMUNITY MEXICAN FIESTA

Garden City Community Mexican Fiesta is always the second Saturday in September in our beautiful downtown Garden City. The "La Fiesta" came to being in 1926. Some of the activities progressed and included the raising of the American and Mexican flags in "la colonia Mexicana", the parade, the crowning of the queen, folkloric dancing, ball games and rifas (raffles).

For more information visit gcfiesta.org.

SEPTEMBER

FALL FEST

Fall Fest combines local and area arts and crafts, folks with food vendors offering an international assortment of tasty samples, talented musicians and much more!

For more information, contact Downtown Vision at (620) 276-0891 or visit their website at gcdowntown.com.



OCTOBER

BOO! AT THE ZOO

The evening offers local families a fun and safe trick-or-treat experience, while also supporting zoo improvements. Passes are \$10 per person, or \$5 in advance. Member's benefits include the trick-or-treat trail and themed train experience. Advanced gate and members gate opens at 4p.m. Regular admission starts at 5 p.m.

For more information, contact Jessica Norton at (620) 276-6243.



DECEMBER

DOWNTOWN EVENING CHRISTMAS PARADE

Come enjoy an evening of beautiful Christmas lights on floats as they drive down Main Street for the annual Evening Christmas Parade!

For more information, contact Melissa Gallegos at (620) 276-0891.

Finney County UPCOMING EVENTS



APRIL 25 - MAY 1

GARDEN CITY CHARITY CLASSIC

First round play of the event will begin on Friday, April 29th, with the final round play on Sunday, May 1st. The event will showcase 144 of the top up-and-coming women golfers. The players will be competing for a total purse of \$100,000. The top ten finishers on the Symetra Tour will receive their LPGA Tour card for the 2023 season

For a list of the week-long events, go to visitgck.com or call (620) 276-0607.

APRIL 30 - MAY 1

BATTLE FOR THE BATS BASEBALL TOURNAMENT

There will be several different age divisions available for this tournament. Tickets are \$5 for adults and \$3 for children. The games will take place at three different fields; Clint Lightner, Peebles Complex and Fansler Field.

For more information contact Jared Rutti at (620) 276-1200.

MAY 14-15

GARDEN CITY GRAND SLAM BASEBALL TOURNAMENT

This baseball tournament will have seven different age divisions; 16U, 14U, 13U, 12U, 11U, 10U and 9U. Admission is \$5 for adults and \$3 for children. This tournament will take place at Clint Lightner Field and Peebles Complex.

For more information or to sign up a team, contact Jared Rutti at (620) 276-1200.

MAY 21

AN EVENING IN THE PAST

Starting at 6:30 pm, this Chautauqua-style living history presentation, outdoors on the Finney County Museum Courtyard, will feature an old-time dinner cooked onsite that will be accompanied by live music and followed by a history re-enactment. The re-enactor will portray an Old West or Native American character in full costume. Seating is limited and will be sold in advance. Tickets are \$18.

For more information, call Steve Quackenbush at (620) 272-3664.

MAY 21

COMMUNITY CULTURAL DAY

Our goal is to involve as many countries as possible who are represented in our community for a day of connection, learning and fun. Join us as we build cross cultural relationships and a greater appreciation and value for the diverse people who exemplify the slogan of Garden City, The World Grows Here. This event will take place from 10 am - 4 pm in Stevens Park and admission is free.

For more information, call Nathan Haeck at (404) 384-4101.

JUNE 3-12

BEEF EMPIRE DAYS

Beef Empire Days is a ten day event that celebrates all things beef. After 54 years of working hard, it's time to celebrate success. Join us in the fun this 2022 season as we fiesta our way through the best parts of the beef industry. There will be something for everyone!

For a complete list of events, go to beefempiredays.com.



Check out our full list of events at visitgck.com!

JUNE 4-5

DINGER DERBY BASEBALL TOURNAMENT

This tournament will have 7 different age divisions; 16U, 14U, 13U, 12U, 11U, 10U, and 9U. These games will be played at Clint Lightner, Academy Field, and Peebles Complex. Admission is \$5 for adults and \$3 for youth.

For more information, contact Jared Rutti at (620) 276-1200.

JUNE 18-19

SILVER SAGE RENAISSANCE FESTIVAL

Come and play the heroes way at the Silver Sage Renaissance Festival 2022! You'll find costumed actors to inspire and amuse, and vendors selling homemade and unique gifts. Plus, experience the creatures of myth and food and drink to fill the belly. Great family fun! The Silver Sage Renaissance Festival will be held in Finnup Park.

For more information or any questions, email silversagerenfest@outlook.com.



JUNE 24-26

JIM CLANTON MEMORIAL BASEBALL TOURNAMENT

The 35th Annual Jim Clanton Memorial Baseball Tournament has three age divisions that teams may enter into: 19U, 16U, and 14U. Admission is \$5 for adults and \$3 for youth. These games will be played at Clint Lightner, Academy Field, and Peebles Complex.

For more information, contact Jared Rutti at (620) 276-1200.



JULY 9

13TH ANNUAL FLEA MARKET FESTIVAL

This outdoor festival of 45-60 vendor booths from all over 15 Kansas communities, features antiques, collectables, art, crafts, food and services for shoppers. The flea market will be from 8 am - 2 pm at Lee Richardson Zoo. Come check all the treasures!

For more information about the event, contact Steve Quackenbush at (620) 272-3664.

JULY 15-18

BABE RUTH BABE RUTH 16-18 YO STATE BASEBALL TOURNAMENT

The Babe Ruth State Baseball Tournament is for kids ages 16 -18 years old. The winner of this tournament will represent the state of Kansas at the Regional Tournament. This tournament will take place at Peebles Field. Admission is \$5 for adults and \$3 for youth.

For more information, Jared Rutti at (620) 276-1200.

JULY 21-25

12 YO CAL RIPKIN MIDWEST REGIONAL BASEBALL TOURNAMENT

This Midwest regional tournament is for ages 14 and under. In this tournament, there will be the state champions from Colorado, Missouri, North Dakota, Nebraska, Iowa and Kansas. This tournament will take place at Clint Lightner Field. Admission is \$5 for adults and \$3 for youth.

For more information, Jared Rutti at (620) 276-1200.

Lodging Amenities

	# of Rooms	Pool	Hot Tub	Gym	Restaurant/Bar	Laundry on Site	Pet Friendly*	Large Recreational Vehicle Parking**
AmericInn Lodge & Suites 3020 E Kansas Ave 620-272-9860 <i>americinn.com</i>	72	Indoor	●	●		●	●	●
Americas Best Value 1818 Commanche Dr 620-275-5095 <i>bestvalueinn.com</i>	76					●	●	●
Best Western Plus Emerald Inn & Suites 2412 E Kansas Ave 620-277-7100 <i>bestwestern.com</i>	60	Indoor	●	●	●	●		●
Clarion Inn & Conference Center 1911 E Kansas Ave 620-275-7471 <i>choicehotels.com</i>	109	Indoor	●	●	●	●	●	●
Comfort Inn 2608 E Kansas Ave 620-275-5800 <i>choicehotels.com</i>	62	Indoor	●	●		●	●	●
Continental Inn 1408 Jones Ave 620-276-7691 <i>continentalinngardencity.com</i>	54							●
Flamingo Hotel 1612 Jones Ave 620-276-7601 <i>visitgck.com</i>	29							●
Garden City Inn 1202 W Kansas Ave 620-276-7608 <i>gardencityinnhotelkansas.com</i>	43	Indoor				●		●
Hampton Inn 2505 E CrestWay Dr 620-272-0454 <i>hilton.com</i>	83	Indoor		●		●		●



TOWNEPLACE SUITES BY MARRIOTT

3510 E Kansas Ave, Garden City • marriott.com • (620) 805-6717



Little did Nichole Harkins know that when she started at TownePlace Suites by Marriott in 2018 it would change her career path. As a front desk clerk, Nichole soon realized she had a passion for the hospitality industry. Her favorite thing about working at the TownePlace Suites by Marriott is meeting guests from all over the world. Through hard work and dedication, she is now the General Manager. TownePlace Suites by Marriott specializes in long term stay guests, so this gives Nichole and her staff the opportunity to really get to know each and every guest on a more personal level.

“They become like family,” Nichole stated. As a long-time resident in Finney County, she is an expert in telling guest what makes Garden City so amazing. “It’s the diversity,” she says. Nichole is always quick to mention her favorite place, the Lee Richardson Zoo.

TownePlace Suites opened its doors in 2014 with travel in mind. Every room focuses on the guest’s comfort. The two-bedroom, two-bathroom suites with a living room and full kitchen are the perfect choice for large families or if you just like to spread out.

Searching for something to do during your stay? Look no further then the lobby where they post local events that are happening the coming week. After a long day of discovering all that Garden City has to offer, you can head back to the hotel and relax by the outdoor pool. Nichole and her staff are happy to show you why so many people call TownePlace Suites by Marriott in Garden City their home away from home.

CLARION INN

1911 E Kansas Avenue, Garden City • choicehotels.com • (620) 209-4344

It's hard to imagine walking in to the Clarion Inn and not seeing Linda Hall there greeting you with a smile. Linda started as a front desk clerk and after sixteen years of hard work is now the Regional Hospitality Director. Linda is a team player, always available to lend a hand in other departments. Her favorite part of working in the hospitality industry is the people. Linda enjoys helping and meeting new guest from all over the world. She and the staff at the Clarion Inn take great pride in providing exceptional customer service.

"My favorite thing about Garden City is that we have big city amenities with a small-town feel," Linda said.

As for Linda's favorite attraction in Finney County, it's definitely the restaurants. "We have so many choices here. There is something for everyone," Linda stated.

Garden City offers international cuisine from all over the world including its world famous, fine Kansas beef. If you are craving a delicious steak expertly prepared look no further than the Clarion Inn's own Baron's Steakhouse & Bar.

The Clarion Inn has everything you need to wake up rested and ready to start your adventure in and around the city. After a busy day of exploring Garden City, relax in the indoor heated pool. Be sure to take advantage of the exercise room. A guest reception is offered Monday through Thursday evenings. With a conference center, restaurant and bar, the multi award-winning Clarion Inn has everything you need to make your stay truly memorable.



Lodging Amenities

	# of Rooms	Pool	Hot Tub	Gym	Restaurant/Bar	Laundry on Site	Pet Friendly*	Large Recreational Vehicle Parking**
Heritage Inn & Suites 1212 Stone Creek Drive 620-277-7477 <i>choicehotels.com</i>	95			•		•		•
Holiday Inn & Suites 2502 E Kansas Ave 620-275-5900 <i>ihg.com</i>	69	Indoor	•	•		•	•	•
Magnuson Red Baron Inn 2205 E Fulton St 620-275-4164 <i>magnusonhotels.com</i>	65					•		•
National 9 Inn 123 Honeybee Court 620-275-0677 <i>national9inngardencityks.com</i>	34	Indoor						•
New Sunflower Inn & Suites 1311 E Fulton St 620-276-2387 <i>visitgck.com</i>	107							•
Sleep Inn 1931 E Kansas Plaza 620-805-6535 <i>choicehotels.com</i>	60			•		•		•
Sunnyland Bed & Breakfast 501 N 5th 620-276-0500 <i>sunnylandbandb.com</i>	7							•
TownePlace Suites by Marriott 3510 E Kansas Ave 620-805-6717 <i>marriott.com</i>	120	Outdoor		•		•	•	•

* Pet deposit or fee may apply. Please contact the hotel directly for this information.

** This does not include large commercial vehicles or semis with large trailers. Please contact the lodging facility directly about these types of vehicle parking.



RESTAURANTS

Applebee's Grill & Bar	3030 E Kansas Ave
Arbys	1719 E Kansas Plaza
Baron's Steakhouse & Bar	1911 E Kansas Ave
Baskin-Robbins	1521 E Fulton St; 2505 Fleming St
Buffalo Wild Wings	1530 Lareu St #100
Burger King	2415 E Kansas Ave; 1601 Taylor Plaza W
Casa Mariachi	125 W Pine St
Central Cup Coffee House	517 N 8th St
Cinnabon	2875 E Schulman Ave; 1265 Solar Ave
Crispy Donuts	511 W Kansas Ave
Dairy Queen	114 W Kansas Ave
Daylight Donuts	201 E Kansas Ave
Dominos	2312 E Kansas Ave Suite C
Dragon Express	1118 N Taylor Ave
Drink It Milk Tea House	3102 E Kansas Ave Suite 200
El Canelo Tacos Y Mariscos	1110 Campus Dr #6473
El Clamatazo	707 E Fulton St
El Patron	606 W Fulton St
El Rancho	305 N Main St, Holcomb
El Remedio	1005 E Fulton St
El Zarape	2501 E Fulton St
Escarchadas Y Escamochas	1804 E Kansas Ave Suite B
Flat Mountain Brewhouse	207 N Main St
Freddy's Frozen Custard	3112 E Kansas Ave
Garden Café/The Scoop	2703 North Taylor Plaza/US-83
Garden City Steak House	1301 E Fulton St
Golden Corral	1727 E Kansas Plaza
Hannah's Corner	2605 N Taylor Ave
International House of Pancakes	2507 Crestway Dr
Jade Buffet	1505 E Kansas Ave
Jax Sports Grille	1907 E Mary St
Jimmy Johns	501 E Kansas Ave
KFC	2208 E Kansas Ave
La Cabana	110 W Kansas Ave



RESTAURANTS CONT.

La Estrella	305 E Kansas Ave
La Playa Dorada	212 W Fulton St B
Las Margaritas	1601 Buffalo Jones Ave
Little Ceasars	1810 E Kansas Ave
Long Johns Silvers Seafood	205 E Kansas Ave
Lovings Cakes	210 E Spruce St
Mariscocs Puerto Nuevo	1107 N Taylor Ave
McDonalds	1613 E Kansas Plaza; 1106 N Taylor Ave
Napoli's Italian Restaurant	2215 S Air Service Dr
Ninja Sushi	416 N Main St
Old Chicago	1010 Stone Creek Dr
Osaka Sushi & Steakhouse	1660 Lareu St
Papa Johns	1016 N Main St
Patrick Dugan's	301 N Main St #5463
Pho Hoa One	713 E Fulton St
Pie Five Pizza	1110 Fleming St
Pinkys	2204 E Kansas Ave #1
Pizza Hut	1502 E Harding Ave #12; 301 E Kansas Ave
Plank's BBQ	912 E Fulton St
Popeyes Lousiana Kitchen	3108 E Kansas Ave
Rib Crib	1750 Lareu St
Scooter's Coffee	601 E Kansas Ave; 2517 Campus Dr
Sonic	1313 E Kansas Ave; 1212 Buffalo Jones Ave
Starbucks	2401 E Kansas Ave
Subway	3285 US-50; 1313 E Kansas Ave; 210 E Kansas Ave;
Subway	1320 N Taylor Plaza E; 3101 E Kansas Ave
Taco Bell	2408 E Kansas Ave
Tacos El Tapatio	1203 E Fulton St
Tequilas	2306 E Kansas Ave
Thai Arwan	902 E Fulton St
The Golf Club at Southwind	77 Grandview Dr
The Thirsty Dog	301 E Jones Ave, Holcomb
Time Out Sports Lounge & Grill	1319 N Taylor Ave
Traditions Soda & Sandwiches	121 Grant Ave
Wendy's	1403 E Kansas Ave

Motorcoach Parking?	Has Bar/Lounge?	Accepts Group Reservations?	Free Wifi?	Price Range?	Has Additional Meeting/Event Space?
				\$	
				\$\$	
	•	•		\$\$	
				\$	
				\$	
				\$\$	
				\$	
•			•	\$	
•		•		\$\$	
		•		\$\$	
•	•	•		\$\$	
•		•		\$\$	
				\$	
			•	\$	
		•		\$\$	
•			•	\$	
•		•		\$	
•		•		\$	•
•		•		\$\$	
•				\$	
•				\$	
•				\$	
•				\$	
•				\$	
•				\$	
•				\$	
•				\$	
•				\$	
•	•	•		\$	
•		•		\$\$	
•	•	•	•	\$\$	•
	•	•		\$	
•	•	•		\$\$	•
				\$	
•			•	\$	



TRANSPORTATION

Garden City has many modes of transportation allowing you to further explore Garden City and Holcomb.

AMTRAK

The Amtrak's Southwest Chief makes morning departures and evening arrivals in the heart of downtown Garden City! **For reservations or a schedule, call (800) 872-7245 or visit amtrak.com/southwest-chief-train.**

GARDEN CITY REGIONAL AIRPORT

The airport is located 7 miles east of Garden City on Highway 50. With access to the world through the Garden City Regional Airport and American Airlines, there are several flights arriving and departing for Dallas/Fort Worth daily. **For more information on flights and schedules, visit fly2gck.com or aa.com.**



CITY LINK

Designed with the community in mind, City Links offers an affordable, reliable and convenient form of public transportation providing citizens of any age access to the entire city as well as a number of specified destinations outside the city limits. **For full route and fare information, visit finneycountytransit.org/city-link.**

TAXI SERVICE

If you prefer a taxi, you can contact our taxi company, Quality Cab. **There are two different locations and their numbers are (620) 275-8294 or (620) 276-3434.**

RENTAL CARS



(620) 276-2113



(620)276-6884

Plan a trip. Schedule an event. Book an adventure.



*When you're ready...
we're ready.*



*visitgck.com
Garden City, Kansas*