



FALL/WINTER 2022

THE HUB

GARDEN CITY & HOLCOMB, KANSAS



Dave Foltz



Frank Deleon



Curtis Peterson



Holli Ayala

*Front Cover by Jason Sawyer.

CONTENTS

- 2 Shopping
- 4 Hidden Trail Brewing
- 5 Southwest Kansas Hunting
- 6 Explore Nature
- 8 News from the Zoo
- 9 Kids Corner
- 10 The Arts
- 12 Water Fun
- 14 Golf
- 16 Get into the Action
- 18 True Crime Exhibit
- 19 Finney County Historical Museum
- 20 Historical Sites
- 22 History Highlight: Hope Makes a Difference
- 23 Annual Events
- 26 Upcoming Events
- 28 Lodging
- 32 Local Restaurants
- 36 Getting Around Garden City

Welcome



We are excited to highlight just a small sampling of what you can expect when you visit the cities of Garden City and Holcomb. Our hope is that you will be adventurous as you delve deeper into the rich history that built this amazing oasis on the plains of Southwest Kansas. Our promise to you is to be ready to answer any question you may have and to assist you to the best of our ability in finding the experience you are looking for in Finney County.

We hope to see you soon!

Roxanne Lansink

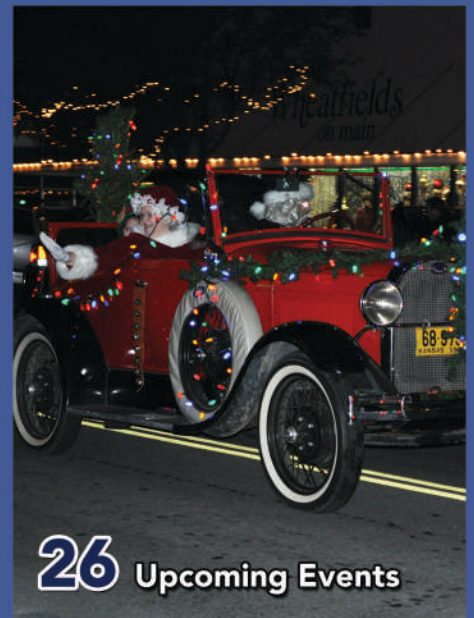
Finney County Convention and Tourism Director



4 Hidden Trail Brewing



8 News from the Zoo



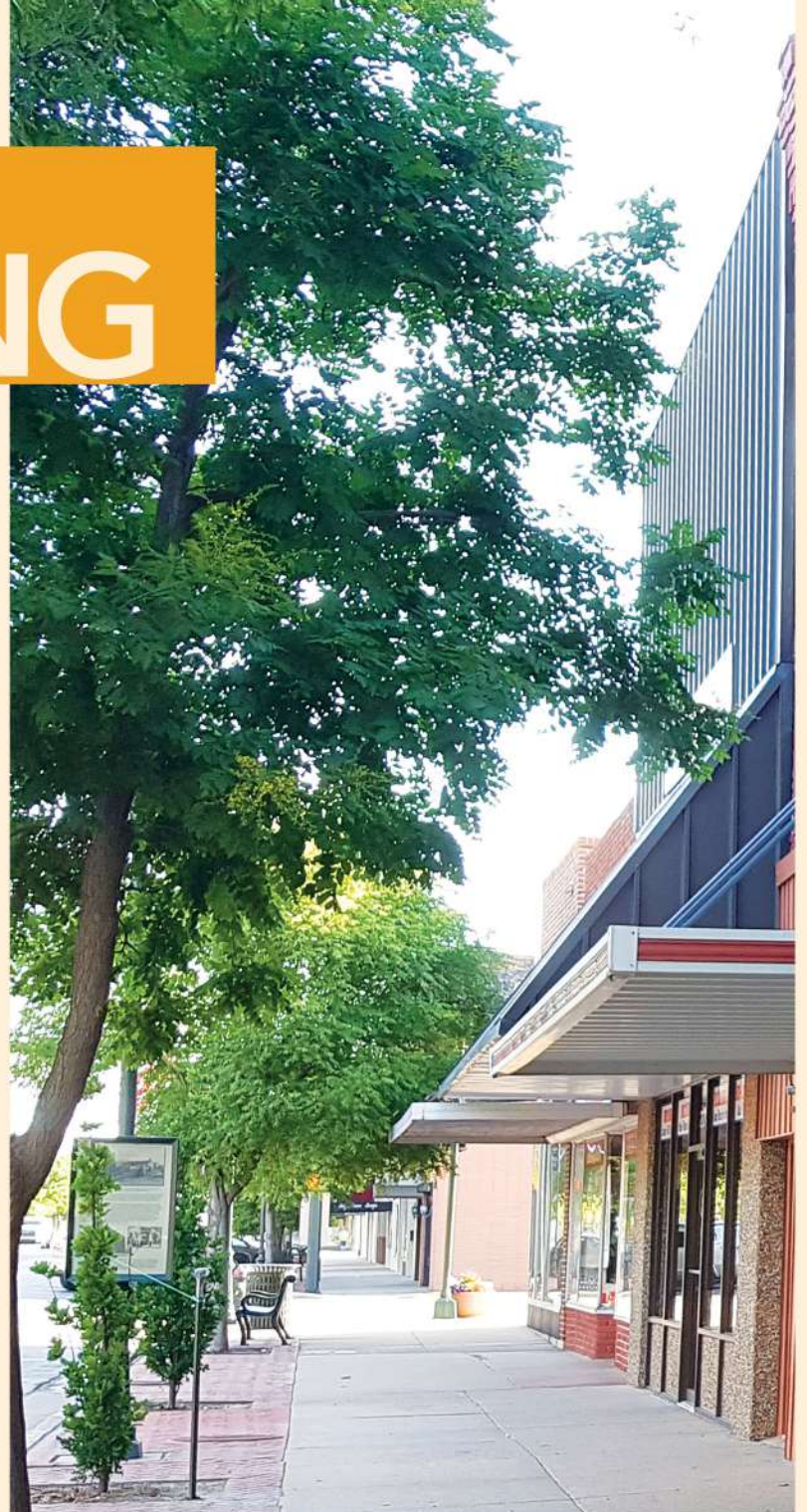
26 Upcoming Events

Downtown SHOPPING

Garden City's Historical Downtown is the perfect place to shop 'til you drop! You can spend the whole day exploring all the shops and restaurants that downtown has to offer. Start your day by grabbing a coffee at Patrick Dugan's Coffee House or if you would like a healthy alternative head over to Roots Juice Co. & Wellness Studio for a delicious juice or smoothie. Then, stop by Corner on Main to shop for that perfect gift for someone special. SageHouse Bath & Body offers handmade bath and body products to make your next self-care day extra relaxing. Make sure to end your day trying one of downtown's many tasty eateries. There is something to fit everyone's appetite.

Along with so many great places to shop and eat, Historical Downtown has a beautiful park that holds numerous events throughout the year. At Stevens Park you'll find events like the Summer Concert Series, Food Truck Fridays, Art-in-the-Park, Beef Empire Days Celebration, band performances and more. The beautiful three-acre park is the place to get in on all the fun! With everything that the Historical Downtown has to offer, it is no wonder it is known as the "Heart of Garden City."

For more information about Downtown Garden City or a list of retailers, visit gcdowntown.com.





SCHULMAN

Crossing

Schulman Crossing Shopping Center has something to keep your whole family satisfied! It features delicious restaurants, numerous clothing stores, charming specialty boutiques and so much more. In 2013, Schulman Crossing broke ground along the U.S. Highway 83/50 Bypass at Schulman Avenue starting with Menards. Cato Fashion, Petco, T.J. Maxx, Dick's Sporting Goods, Hobby Lobby, Ross Dress For Less, Bling and Ulta Beauty opened in 2014. Dollar Tree, Buffalo Wild Wings and Rib Crib soon followed in 2015. The shopping center continues to grow with new shops opening yearly with the newest editions being Five Below and The Buckle. Construction is almost complete for Old Navy to join the shops at Schulman Crossing Shopping Center.

For some, shopping is a fun excursion during a trip. For others, shopping is the reason for the trip! No matter where you fall on that spectrum, Schulman Crossing Shopping Center has you covered.





HIDDEN TRAIL BREWING

2010 E Schulman Ave, Garden City, Kansas ■ (620) 315-4690

Choose a job you love and you will never work a day in your life. That is exactly what three long-time friends decided to do right here in Garden City. Cody Cundiff, Colin Williams and Michael Cole set out to make their dream a reality. Their story begins in the summer of 2020. While working together, they realized that they shared the same hobby. They dreamed to open a hangout style brewery, without a kitchen, that would focus solely on beers made in house. The brewery would house an outdoor area, family friendly games, and would bring in a rotation of various food trucks.

That first summer was spent touring surrounding breweries in Kansas, Colorado and Nebraska to decide exactly what these friends wanted their place to become. Next, they would need to find the perfect place to house their dream brewhouse. They settled on an old barn built in the 1940s with grain auger still intact. The renovated space pays homage to the barn by using salvaged wood for the bar and tabletops. Construction began the following summer with them doing demolition themselves. In June of 2021, contractors hit the ground running and the friends were very excited to have contractors that allowed them to help as much as possible throughout the process.

Hidden Trail Brewing opened November 24, 2021 and the community has welcomed them with open arms. With a few arcade games, lots of board/card games, and a foosball table, you can bring the family down and enjoy a fun evening at Hidden Trail Brewing. They are excited to be here and cannot wait for memories to be made. Hidden Trail is a family friendly option in Garden City, Kansas.



HOURS

Monday-Tuesday: Closed
Wednesday - Thursday: 3:30pm - 10:00pm
Friday: 3:30pm- 11:00pm
Saturday: 12:00pm - 11:00pm
Sunday: 12:00pm - 8:30pm

HUNTING

in Southwest Kansas



From corner to corner, Kansas hunting opportunities seem nearly limitless. Kansas is home to some of the most extensive public hunting lands in the country. We have over 1,300,000 acres of public and private lands that are open to seasonal hunters. Arguably, some of the best are right here in Southwest Kansas, with a vast array of habitats, and a variety of different game species. Our hunting outfitters are also ready to help, whether you're a seasoned pro, or someone wanting to learn how to hunt.

Our hunting culture and heritage runs deep, but you don't have to be a local to participate. In fact, we've become known as one of the largest travel hunter destinations, hosting hunters from around the world. Discover why more hunting enthusiasts are choosing Garden City as their base camp destination, and why you should too!

Rooster Roundup

During hunting season, 600 pheasants will be banded and released in Southwest Kansas. If you are lucky enough to bag one of the banded pheasants, bring your leg band to one of the approved locations to register your leg band and claim your prize! For more information go to visitgck.com.



Download the official
Kansas Department of Wildlife
Hunting License App

GET IT ON
Google Play

Download on the
App Store



SCAN ME

HUNTING GUIDE

Riverside Ranch Outfitters
2013 Pioneer Road
Garden City, Kansas 67846
(806) 206-9910

TAXIDERMY

King Taxidermy
10505 6th Road
Ingalls, Ks. 67853
www.kingtaxidermy.com
(620) 335-5424

Great Plains Taxidermy
218 J E Humphreys Street
Ashland, Ks. 67831
(620) 635-4423

GUN DEALERS

AAA Pawn Shop
132 W. Kansas Ave
(620) 276-4000

Postrock Trading Company
1203 N Taylor Ave
(620) 276-8171

Walmart Supercenter
3101 E Kansas Ave
(620) 275-0775

Wooden Nickel Pawn Shop
1302 Taylor Plaza E
(620) 276-6074

Working Man's Guns
1106 McCoy Dr
(620) 272-0803



EXPLORE NATURE

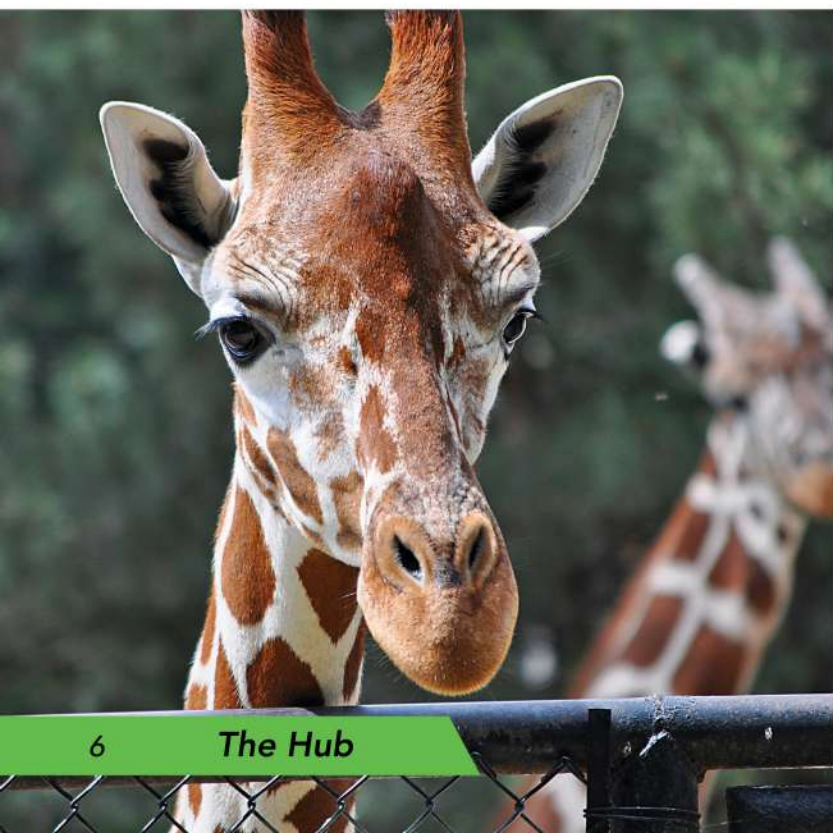
Explore nature in beautiful Finney County! Finney County has so many fun and interesting things to do that will either take you straight into nature or help you learn more about how our planet works and how we can preserve it. Whether you are traversing the grounds of Lee Richardson Zoo, learning about conservation, or checking out the majestic bison at the Sandsage Bison Range, there is something for everyone at any age. Here are just a few places in Finney that will get you outdoors!



LEE RICHARDSON ZOO

Lee Richardson Zoo sits on 50 beautiful acres, and is truly the jewel of Garden City. Here you can enjoy lush landscapes, lovely walking and driving paths, playgrounds, picnic areas, and of course, hundreds of exotic and local species of animals. Whether you're touring Garden City with family, friends, or solo, the zoo is a wonderful place to spend the day. Open year-round and free to pedestrians, visitors are able to experience giraffes, lions, bears, primates, birds, and many more animals, native and exotic, at a gorgeous facility accredited by the Association of Zoos and Aquariums. Be sure to visit the Safari Shop while at the zoo for a memorable souvenir. The zoo is free to walk through, while visitors viewing the zoo by car pay a nominal admission.

For more information, call (620) 276-1250 or go to leerichardsonzoo.org.



FINNUP CENTER FOR CONSERVATION EDUCATION

This center is a state-of-the-art facility. The Finnup Center consists of two classrooms, one large meeting room/auditorium, interactive television studio, and interactive learning stations introducing the wonders of nature to over 15,000 students of all ages annually. Bring your group and enjoy the wonders of nature.

For more information, call (620) 276-1250 or visit leerichardsonzoo.org/finnupcenter.php.



NATURE EXPLORE CLASSROOM

Garden City's own Nature Explore Classroom is in a secure area just outside the Finney County Library. There, kids will find The Grassy Knoll, The Gathering Tree, Home of the Gnome, River Ramble, Sunflower House, Mulch Gulch, Secret Path, Dream Building, Melody Meadow, and Art Island. Each of these places provides a unique opportunity for a child to pursue a specific type of activity, encouraged by colorful signs and natural objects.

For more information, call (620) 272-3680.



SANDSAGE BISON RANGE

Located in the sandsage prairie, the bison remains one of the few tracts of native sandsage prairie not converted to irrigated cropland. The presence of several tall grass species and sand sagebrush makes this southern plains ecosystem truly unique. Sandsage Bison Range is home to the oldest publicly owned bison herd in Kansas. Interesting critters that also call the sandsage prairie home include the lesser prairie chicken, spotted ground squirrel, kangaroo rat and mule deer. Reservations are required for tours to see the buffalo and other animals on the sagebrush prairie and wildflower tours.

For more information, call (620) 276-8886.



NEWS FROM



The word 'flamingo' comes from the Spanish word for 'fire' referring to, of course, their bright pink feathers. But, did you know that when a flamingo chick is born it isn't pink at all? In fact, it's a dull grey color. The familiar pink color comes from their diet. With their distinctive pink feathers, long spindly legs and the ability to stand on one leg for up to four hours the Chilean flamingos are instantly recognizable. Their natural diet would consist of mainly algae, shrimp and plankton. All these have what they call 'carotenoid' (the same pigment which makes carrots orange). It's this pigment that turns flamingos pink.

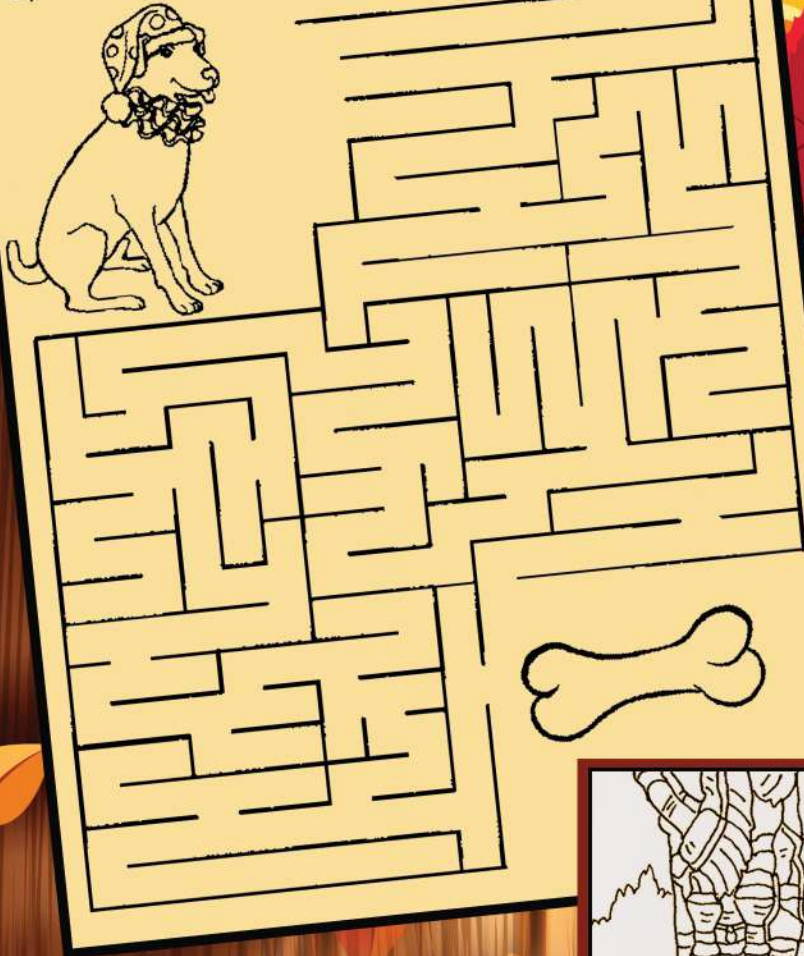
You might also be wondering why is their beak shaped like that? It's designed that way so they can filter feed in the water. They hold it upside down to filter out the small bits of food in the water and it looks like they are nibbling the surface.

The backward bending knee of a flamingo isn't its knee but rather its ankle. Its knee is much higher and hidden underneath its feathers. Flamingos are known for standing on one leg. There are lots of different theories on why they do this but fundamentally flamingos stand on one leg to avoid muscular fatigue. Believe it or not flamingos are more stable for long periods of time standing on one leg rather than two. How long can you stand on one leg?

To learn more about flamingos, be sure to stop by and see the new Chilean Flamingo exhibit at Lee Richardson Zoo and visit leerichardsonzoo.org. We hope to see you soon at Lee Richardson Zoo!



Sparky can't find his bone. Will you show him the way?



Kids Corner



www.hiddenpicturepuzzles.com





The Arts

GARDEN CITY ARTS

Garden City Arts is a local, non-profit arts organization showcasing a variety of mesmerizing exhibits. It is an exceptional place to peruse captivating collections, and support local Kansas artists. Since its founding in 1989, Garden City Arts has strived to bring more arts and humanities events to Southwest Kansas.

Garden City Arts offers an intriguing array of fine art, photography, textile and other revolving art exhibits for all tastes. In addition, the center conducts art classes for all ages and has a delightful gift gallery, featuring one-of-a-kind art and jewelry.

View their calendar of events for all of their in-person and virtual exhibits and family-friendly activities. From watercolor workshops to Art in the Park, the crew at Garden City Arts is always planning exciting cultural events.

Garden City Arts is located at 318 North Main Street in Garden City. The gallery is open Tuesdays through Saturdays from 1 pm until 5 pm. General admission is free.

For more information about Garden City Arts, please call (620) 260-9700 or visit gardencityarts.org.



BOY SCOUTS OF AMERICA JESSIE MONTES ART GALLERY

In 1990, Jessie Montes began producing three dimensional sculptures, landscapes, portraits and abstract design pieces using quarter inch strips of cardboard glued edgewise on a cardboard base. Acrylic paint is used on most of his pieces, providing vibrant, exciting art. In 2017, Duane and Orvleta West gifted their 53 piece collection of Jessie Montes art to the Sante Fe Trail Council. The gallery is open Monday - Friday, 9am to 5pm, and is located at 402 Fulton Street in Garden City.

For more information, call 620-275-5162.

MERCER GALLERY

The Mercer Gallery at Garden City Community College is committed to offering a rich and diverse cultural experience to the campus community as well as to the greater region. The Mercer Gallery offers people a transformative opportunity to experience life as depicted by regional, national, and international artists. It is their goal to provide exhibitions which are inclusive of a variety of media and concepts. They provide exhibitions that will enhance lifelong experiences.

Located in the west wing of the Joyce Fine Arts building, at 801 Campus Drive in Garden City, the Mercer Gallery is open Monday - Wednesday from 9am to 4pm, Thursdays from 9am to 10pm, and Fridays from 9am to 3pm during the regular academic year (closed Summer term and other breaks). Admission is free.

For more information, call 620-276-9644.





WATER FUN FOR THE WHOLE FAMILY



Parrot Cove Water Park is a 36,000 square foot paradise, with four water slides, a tropical lagoon, a lazy river, a rock-climbing wall, a gamers' palace, and much more. Heated to a comfortable 84 degrees and featuring a 40-foot Riptide Rush and a Screamin' Tsunami, exciting adventures await for the whole family. For those in search of something more laid back, the Key Lime Creek lets you drift more than 500 feet around the whole of Parrot Cove.

Show off your gaming skills in the big game room where you'll find old-time classics as well as some more modern challenges to keep you guessing. Enjoy the luxury of playing without the need to fumble with coins and dollar bills by loading your game card. They are open to the public on Fridays, Saturdays and Sundays.

There's nothing like hours of water adventures to work up an appetite. Luckily, Parrot Cove Water Park has the answer with its Snack Shack. They have bagged chips, individually-packaged

pastries, slushies, bottled drinks, hot dogs, nachos and other snacktime favorites. Parrot Cove also has a dedicated snacking area that oversees the water park so parents can keep an eye on things at all times.

For more information, go to swimatparrotcove.com or call (620) 805-5303.





GARDEN RAPIDS AT THE BIG POOL WATER PARK

Garden Rapids at the Big Pool built in 2021 includes a competition pool, zero depth entry, a lazy river, slides, a leisure pool, a Splashtacular stand-up-slide, and fly high slide! The ICONIC elephant slide that was part of the world famous "Big Pool" has a new home!! You are now able to slide down memory lane before visiting the Garden Rapids facility and during the off-season! Each feature at Garden Rapids is animal-themed, like their neighbors at Lee Richardson Zoo. You can hang out at Lion Lounge or float down Otter Rapids, the lazy river, or try out Dolphin Dive. Garden Rapids has your whole family covered for fun under the sun!

For more information, call (620) 276-1160.

Daily Rate - \$3

Open During Season:

Monday - Saturday 1pm to 8pm

Sunday 1pm to 6pm



SONNIE BAIRD SWIMMING POOL

The Sonnie Baird Swimming Pool is named after Sonnie Baird, the former director of Holcomb Recreation who retired in 2007. In 1979, Baird started her career in Holcomb and was a tremendous asset for the community throughout her 27 years of service. The pool features plenty of lounge chairs, a thrilling slide, a snack bar, and a kiddie pool. Plenty of fun in the sun for the whole family.

For more information, call (620) 277-2610.

Daily Rate - \$2 (rates apply to all persons - swimmers & non swimmers)

June Pool Hours:

Monday - Thursday 1pm to 6pm

Friday - Sunday 1pm to 5:30pm

July & August Pool Hours:

Monday - Thursday 2pm to 6pm

Friday - Sunday 2pm to 5:30pm

4pm break/whistle:

If the attendance is at 20 patrons or less the pool will close for the day.





BUFFALO DUNES GOLF COURSE

Buffalo Dunes Golf Course is ranked one of the top ten municipal golf courses in the United States. It has been recognized by Golf Magazine and Travel & Leisure Magazine as places to play and best bangs for the buck. Challenging, enjoyable and affordable, Buffalo Dunes will give you a little bit of a Scottish feel as it is nestled among the historic sand hills six miles south of Garden City. Southwest Kansas offers a four season climate and golf can be played throughout the year, weather permitting. Buffalo Dunes is the host course to the prestigious Garden City Charity Classic, a Symetra Tour event. Among the golfing greats who have walked the fairways of the dunes are U.S. Open champions Steve Jones and Lee Janzen, and British Open champions Tom Weiskopf and Stewart Cink.

For more information about the course, go to buffalodunes.org.

GOLF COURSE AT SOUTHWIND

There's a reason for the name at Southwind Country Club. The course was opened in 1980 with one overriding factor in mind. In Southwest Kansas the wind blows from the south often and hard. Taking that into account, the course was laid out in the rolling sand hills south of Garden City to take advantage of that and it worked! Southwind has become a favorite amongst touring golf professionals.

For more information about the course, go to southwind-gc.com.



The Epson Tour (formerly the Symetra Tour) is the official qualifying tour of the LPGA Tour and enters its 42nd competitive season in 2022. With the support of the entitlement partner Epson, the Tour's mission is to prepare the world's best female professional golfers for a successful career on the LPGA Tour. In the last decade, the Epson Tour has grown from 15 tournaments and \$1.6 million in prize money to over \$4 million awarded across 20+ events in 2022. With more than 600 graduates and alumnae moving on to the LPGA Tour, former Epson Tour players have won 458 LPGA titles.

The Epson Tour schedule runs from March through September and has more than 300 players competing from around the world. The top 10 players from the LPGA Futures Tour money list earn LPGA membership for the following year.

The Garden City Charity Classic is the Regions only professional ladies golf tournament. Lady golfers from around the world gather in Garden City to battle for the right to earn their LPGA card. The Tournament locally facilitates ladies high school's golf programs in the 22 counties of Southwest Kansas. The Tournament is in its 8th year and has hosted the only back-to-back tournament in the history of the Tour. Several countries and all 50 states have participated in the Garden City Charity Classic!

For more information or to volunteer, call (620) 276- 0607.



The Southwest Kansas Pro-Am is the longest running professional golf tournament in the State of Kansas. The Southwest Kansas Pro-Am began in 1979 as a traveling tournament. Each year it was held at Dodge City, Liberal, or Garden City, Kansas until it was decided the two beautiful renowned golf courses in Garden City should be the permanent home of the Pro-Am. Two of Kansas' premier golf courses, The Golf Club at Southwind and Buffalo Dunes, play host to this event.

The Southwest Kansas Pro-Am Golf Tournament benefits the Newborn Intensive Care Unit at St. Catherine Hospital in Garden City. These funds provide necessary dollars to maintain the high level of care and education required for the Level II, seven bed NICU department.

For more information, go to swksproam.com.



GET INTO THE ACTION

Ready. Set. Go! If you are looking for activities that are full of action and fun for the whole family, Finney County has you covered! From racing and paintball to escape rooms and music, we have it all.

AIRPORT RACEWAY

During warm summer nights, the Airport Raceway is a popular destination for the whole family. Ten miles east of Garden City, the Airport Raceway holds weekly events for the racing community. The 1/6-mile raceway is home to Dwarf and Midget car races. The short inner track is for go-karts and junior sprint cars. It is sure to get your heart racing whether you are a driver or an enthusiast in the stands.

For more information, visit airport-raceway.com.





ESCAPE THE CLOCK

Imagine entering Alice in Wonderland. Everything looks fine until you realize the rabbit hole is closing. Now, you and your friends need to figure out how to escape before time runs out. You aren't sure what's going to happen if you don't, but you also don't want to stick around to find out. The clues you need to escape are right in front of you, you just need to look very, very carefully...Will you escape or be trapped in Wonderland forever?!? Garden City's Escape the Clock offers five rooms, right on Main Street! It is easy to reserve a space and reservations can be made online. Escape the Clock offers special pricing for professional team building and large parties.

For pricing, scheduling, and room descriptions, call (620) 805-5064 or visit escapetheclockgc.com.



FLAT MOUNTAIN BREWHOUSE

Flat Mountain Brewhouse is Garden City's first and only brewery. Established in 2019, they are a family friendly establishment that specializes in making unique craft beers for a unique community. With live music, comedy shows and open mic nights you will be entertained while experiencing "The Little Brewhouse on the Prairie!" Flat Mountain Brewhouse has 12 rotating taps and a killer food menu. The historic style brewery offers you the feel of having great beer in an upscale environment, without the upscale prices!

For more information about upcoming events, call (620) 260-2886 or go to flatmountainbrewhouse.com.



SAINTS OF FUN

Saints of Fun Paintball is the place to go for an unforgettable day of fun with friends and family. They provide fun for all ages with paintball, laser tag and zorb balls. All equipment is provided, including paintballs, field entry, air (HPA), gun rental and mask. Laser tag is similar to paintball but allows for unlimited ammo and does not require a facemask. Zorb Balls can be rented from Saints of Fun for a day of non-stop entertainment.

For more information, call (620) 521-7889 or visit saintsoffun.com.



True Crime

Solving Notorious Cases from Finney County's History

The True Crime Exhibit at the Finney County Historical Museum is a riveting true crime exhibit that incorporates evidence, artifacts and information showing how local and area law enforcement officers solved the crime spree of the Fleagle Gang, bank robbers and murderers of the 1920s who were once as widely known as Baby Face Nelson, John Dillinger, Bonnie Parker and Clyde Barrow. The exhibit also educates visitors about the infamous 1959 Clutter murder case, which inspired author Truman Capote to produce the acclaimed novel, "In Cold Blood," about the deaths of the Herb and Bonnie Clutter family at the hands of prison parolees Richard Hickock and Perry Smith.

This exhibit showcases forensic evidence from the both cases that was used in obtaining convictions that led to the execution of the perpetrators. The incriminating evidence in the exhibit includes a boot worn by Smith the night of the Clutter murders, which left a print linking Hickock and the wearer to the killings; and car window glass on which gangster

Jake Fleagle left his finger print in the commission of a murder after robbing the First National Bank in Lamar, Colorado. That print, one of the first used in an FBI-related investigation, linked Jake and Ralph Fleagle, as well as accomplices George Abshier and Howard "Heavy" Royston, to the fatal heist.

Additional items were added in 2020 and include the judicial robe and chair used by Judge Roland Tate in the Clutter case, and eight guns wielded by the Fleagle Gang in their decade of robberies and murders. In all, the exhibit includes more than 20 additional artifacts and approximately three dozen historic photographs.

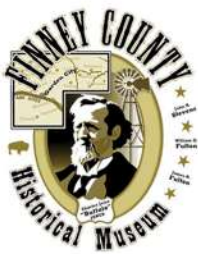
"True Crime – Solving Notorious Cases from Finney County's History," opened in 2018 and is one of more than a dozen exhibits in three galleries of the museum. You don't want to miss this intriguing exhibit.

For information, contact the Finney County Historical Museum at (620) 272-3664.





Finney County Historical Museum



History lurks around every corner in Finney County, Kansas and the Finney County Historical Museum is THE place to learn about Garden City and Holcomb's cultural past. While walking through the halls, you'll be immersed back in time to the days of

the Fulton Brothers and icon CJ Buffalo Jones, a co-founder of Garden City and buffalo breeder. Learn all about the Spirit of the Plains and how Finney County got started and has thrived.

There are so many diverse and interesting exhibits at the Finney County Historical Museum. Become a part of history by dressing up in historic clothes at a mock up of the Windsor Hotel like in its glory days. You will also find the world's largest hairball found in a cow's stomach. The museum presents various long-term and temporary exhibitions that draw a huge variety of visitors curious about the social, cultural and natural history of Southwest Kansas.

The museum also includes the historic William D. and Luticia Fulton House, dating back to 1884. The Fulton House, home of town founders, William D. and Luticia Fulton, is one of the few remaining houses from the earliest days of Garden City. Built in 1884, William and Lettie's last home is a delightful one-half story national folk style house surrounded by charming flower gardens. The living room and dining room have been restored and furnished with period furniture and accessories to make you feel like you've stepped back in time. Make sure not to miss the front parlor houses and an informative exhibit about early Garden City and the four founding families.

One of the finest examples in Kansas of a one-room schoolhouse, the 19th Century Pleasant Valley School was moved to Fennup Park in Garden City in the 1970s and is now located near the museum. Built in the 1890s, it served as a social center as well as a school for many decades.

If you want to dig even deeper into Finney County's or your own family history, Finney County Historical Museum is home to the Leola Howard Blanchard Research Library. The research library is an excellent research center and offers primary sources for the history of Finney County and assistance with family genealogy. The library contains a large photograph collection, archives and manuscript material, original newspapers, maps and microfilm of early day publications.

After browsing the over 100,000 artifacts the museum has to offer, make sure to stop by the unique gift shop for your Garden City, Kansas souvenir. Additionally, the museum sponsors numerous events throughout the year and operates a fast-growing education outreach program. There is a meeting room available for public booking.

For more information, call (620) 272-3664, check out Facebook or visit finneycounty.org.

Winter Hours: Monday - Sunday 1pm - 5pm

Summer Hours:

Monday - Saturday 10am - 5pm & Sunday 1pm - 5pm

Admission: FREE

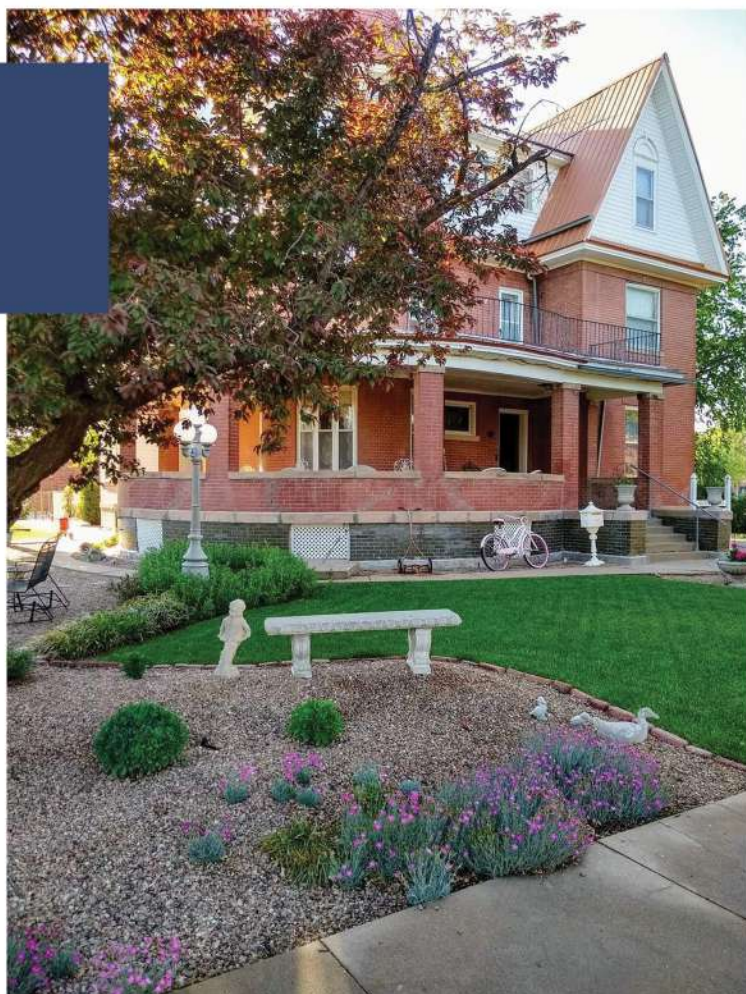
HISTORIC SITES

From Native American roots to buffalo hunters and war veterans, Finney County is a diverse melting pot of immigrants. No matter the reason for your visit to the area, take some time to learn about Finney County's rich and storied past. Here are a few of the must see historic sites around the area!

FULTON HOUSE

The William D. Fulton family moved into this house from their homestead in September of 1884. William and his brother, James, were the first to file on land in (Sequoyah) Finney County in 1879. Located south of the museum, the home was relocated in 2004 from its original location at 404 North 7th. The restored Folk Victorian home is surrounded by period correct floral gardens and filled with period correct furnishings.

Free guided tours are available by calling (620) 272-3664.



SUNNYLAND BED AND BREAKFAST

Sunnyland was the three-story retirement home of David R. and Maretta Menke from 1909 until they sold the property in 1917 to retire in California. David Menke was born in Pittsburg, Pennsylvania in 1948 and married Maretta Urie in 1869. With three small children, Mr. and Mrs. Menke started for western Kansas in early summer of 1878 and arrived in Garden City on August 20, 1878. He opened the first store, was the first postmaster and was also County Treasurer. Sunnyland is a 1909, Queen Anne style, three-story brick home. With its wraparound porch, original woodwork and fireplaces, period furnishings, open stairway and third level ballroom, Sunnyland is a must see masterpiece.

For tour information or to make a reservation, call (620) 276-0500.

To learn more about our historic treasures, please go to visitgck.com.



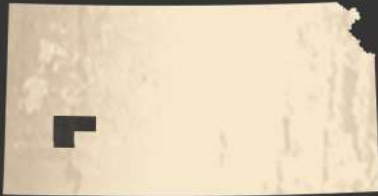
WINDSOR HOTEL

Constructed in 1888 by John A. Stevens, this four-story hotel was among the first buildings built in Garden City. Construction began in March 1887 ending in the spring of the following year. The project cost Stevens nearly \$100,000 and the hotel was built using local materials. The hotel has 125 rooms and even had an access connecting it to the Stevens Opera House which was also built by John Stevens. Nicknamed the "Waldorf of the Prairie", the hotel was reputed to be the largest between Denver and Kansas City. In 1972, the Windsor Hotel was added to the National Register of Historic Places by the US National Park Service. The Windsor closed in early 1977, but you can still see it by booking a tour. Tours are available in the summer months.

For more information about tours, email fcpa.ks@gmail.com.



HISTORY HIGHLIGHT



Hope Makes a Difference



Clifford R. Hope was one of the most influential and respected politicians ever to emerge from western Kansas, serving more than 30 years in the United States Congress. Despite his many years in Washington, he never lost touch with his Kansas roots and he never forgot those he was representing.

Hope spoke out about issues based on principle, even if it was unpopular at the time. As far back as the early 1920s, he criticized the Ku Klux Klan. He also supported several measures from across the political aisle including Harry Truman's civil rights initiative and Truman's removal of General MacArthur from his post.

Clifford Ragsdale Hope was born in Birmingham, Iowa, on June 9, 1893. Unlike many of his future colleagues in Washington, Hope attended public schools in his youth. At the age of 13, Hope moved with his family to Garden City, Kansas, a place he would call home for the rest of his life. In 1917, Hope graduated from Washburn Law School in Topeka, and then promptly achieved admission to the bar. However, fate put his law career on hold. That same year the United States entered World War One. Motivated by a sense of duty, Hope volunteered to join the American military effort gearing up to fight in Europe.

In all, Hope served around two years in Europe before finally returning home after the conclusion of the war and was eager to carry on with his life. In 1921, Hope won election to the Kansas State House of Representatives, beginning his long and illustrious political career. In 1923, he was chosen to serve as the Speaker Pro Tempore of the house and in 1925 he was elected Speaker. At the time, he was the youngest man in Kansas's history to serve as Speaker of the House.

After thirty years of service in Congress, Hope decided to retire to his beloved home of Garden City. Clifford R. Hope passed away on May 16, 1970 and was buried at Valley View Cemetery in Garden City. These days, it's hard to imagine a politician that is universally renowned by both his colleagues and his constituents, but it seems Hope achieved this rare feat. Of all the great Americans that have emerged from America's heartland, Clifford R. Hope certainly stands out for his contributions to Kansas and to the United States.

For more information on Clifford R. Hope, visit the [Finney County Historical Museum](#).



ANNUAL EVENTS

For a list of all upcoming events, check out Annual Events at visitgck.com

MARCH

ANTIQUe APPRAISAL FAIR

This is a live, all-day event, styled like the Antiques Road Show television program, during which participants bring heirloom items to be evaluated on stage by a panel of antique dealers and other experts. The event raises funds for the Finney County Museum, while providing history related information and entertainment for participants, spectators, and collectors.

For more information, contact Steve Quakenbush at (620) 272-3664.

APRIL

GARDEN CITY CHARITY CLASSIC

Watch the top 144 pro women golfers from all over the world compete on this leg of the Symetra Tour where the top ten will earn their LPGA cards.

For more information, contact Jason Hase at Buffalo Dunes (620) 276-1210.

MAY - JUNE

BEEF EMPIRE DAYS

Beef Empire Days is an eleven day celebration, educating the community about the beef industry. Parades, parties and tastings in the park add to the enjoyment of the week.

For a schedule of events, visit beefempiredays.com or call (620) 275-6807 for more information.



JUNE

SOUTHWEST KANSAS PRO-AM

For over 35 years, Garden City has been the host for Kansas' longest running professional golf tournament, The Southwest Kansas Pro-Am. Lasting almost a week, the Pro-Am consists of many different events along with the main tournament, proving that there is something for everyone.

For more information, contact Paige Kraus at (620) 272-2177.

JULY

ANNUAL FLEA MARKET FESTIVALS OF ANTIQUES, COLLECTIBLES, ARTS & CRAFTS

This is an outdoor festival of antiques, collectibles, arts, crafts, and food, drawing with vendors from multiple communities to offer goods to a crowd of shoppers from much of Kansas, plus two neighboring states.

For more information, contact Steve Quakenbush at (620) 272-3664.



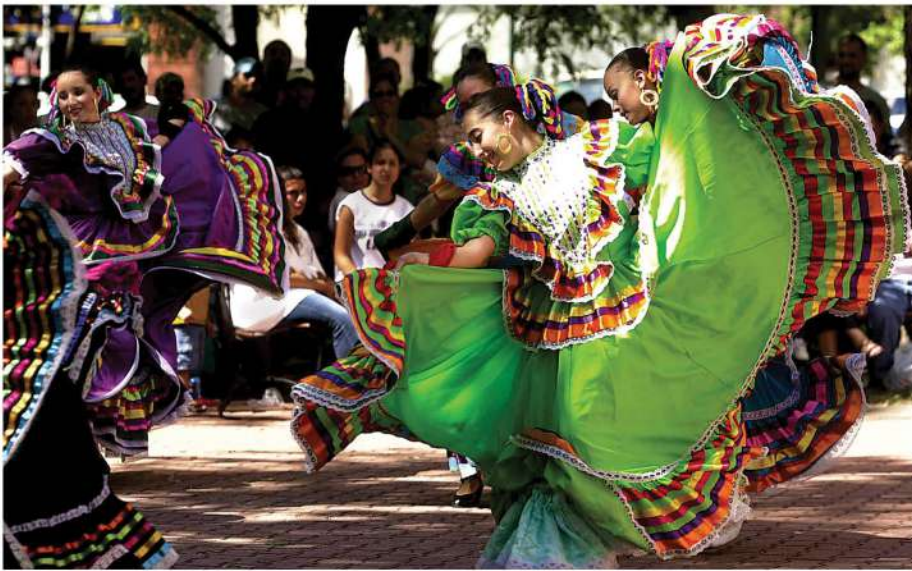
AUGUST

TUMBLEWEED FESTIVAL

The festival features professional groups playing jazz, rock, Latino, South African, Caribbean, Zydeco, folk, bluegrass, and a Capella. It hosts local and regional musicians as well as a stage and huge tent devoted to children's entertainment and art.

For more information, visit the festival website at tumbleweedfestival.com. You can also visit their Facebook page at facebook.com/tumbleweedfestival/.





SEPTEMBER

GARDEN CITY COMMUNITY MEXICAN FIESTA

Garden City Community Mexican Fiesta is always the second Saturday in September in our beautiful downtown Garden City. The "La Fiesta" came to being in 1926. Some of the activities progressed and included the raising of the American and Mexican flags in "la colonia Mexicana", the parade, the crowning of the queen, folkloric dancing, ball games and rifas (raffles).

For more information visit gcfiesta.org.

SEPTEMBER

FALL FEST

Fall Fest combines local and area arts and crafts, folks with food vendors offering an international assortment of tasty samples, talented musicians and much more!

For more information, contact Downtown Vision at (620) 276-0891 or visit their website at gcdowntown.com.



OCTOBER

BOO! AT THE ZOO

The evening offers local families a fun and safe trick-or-treat experience, while also supporting zoo improvements. Passes are \$10 per person, or \$5 in advance. Member's benefits include the trick-or-treat trail and themed train experience. Advanced gate and members gate opens at 4p.m. Regular admission starts at 5 p.m.

For more information, contact Jessica Norton at (620) 276-6243.



DECEMBER

DOWNTOWN EVENING CHRISTMAS PARADE

Come enjoy an evening of beautiful Christmas lights on floats as they drive down Main Street for the annual Evening Christmas Parade!

For more information, contact Melissa Gallegos at (620) 276-0891.

Finney County UPCOMING EVENTS



SEPTEMBER 9-10

96TH ANNUAL GARDEN CITY COMMUNITY MEXICAN FIESTA

The Mexican heritage that helps shape Garden City's unique culture draws special notice during the annual community event "Fiesta". This year we will be celebrating the 96th anniversary! The Garden City Fiesta is the longest-running annual community celebration in Garden City! The Fiesta parade, begins at 10 a.m. on Saturday, September 10th on Main Street and the celebration will continue immediately after the parade at Stevens Park, featuring a series of family-friendly activities, food, and live music!

For more information go to www.gcfiesta.org.

SEPTEMBER 17

FALL FEST DOWNTOWN GARDEN CITY 2022

Since 1969, Fall Fest is a huge festival of food, over 90 vendors and kids activities. The Knights of Columbus Oktoberfest and Kansas Krusiers Car Show are also a part of this large Downtown event. There is something for everyone at Fall Fest. Open 9:30 am - 4:00 pm.

For more information contact Downtown Vision at (620) 276-0891 or visit their website at gcdowntown.com.

SEPTEMBER 24

A WILD AFFAIR

"A Wild Affair," Lee Richardson Zoo's wildest and most prosperous "Fun-Raiser" of the year is Saturday, September 24 from 5:00 - 9:00 pm. This exceptional evening takes place under the stars of the Zoo's West Green and features live music by Mike Benish and the Buckner Creek Band, as well as special appearances by zoo animal ambassadors. Enjoy a roaring good time while you and friends sip on a variety of adult beverages while sampling delicious foods from some of the region's best restaurants and caterers. Bid on hundreds of unique items in the live and silent auctions, all to benefit improvements at Lee Richardson Zoo.

For more information, contact Friends of Lee Richardson Zoo at 620-276-6243.

OCTOBER 22-23

PEDDLERS MARKET ANTIQUE AND CRAFT SHOW

This free event will be held the at the Finney County Exhibition Building at 409 Lake Avenue on October 22, 10:00 am - 6:00 pm, and October 23, 11:00 am - 4:00 pm. The event will invite vendors with antiques, arts, crafts, handmade items and limited commercial vendors.

For more information or to register to be a vendor email peddlersmarketgck@gmail.com.



Check out our full list of events at visitgck.com!



OCTOBER 22

BOO! AT THE ZOO

The evening includes a trick-or-treat trail with 38 'spooktacular' treat stops, creepy creature encounters with zoo docents and a journey through a ghoulish graveyard. Guests are asked to come hungry with an ogre-sized appetite, as the Safari Shoppe is selling Frankenweenies (hot dogs), Spookies and Cream as well as other chilling flavors of Dippin' Dots ice cream and a variety of snacks and beverages. Support the Zoo's efforts to reduce waste by bringing your own trick-or-treat bag from home! Admission is \$5 per person in advance or \$10 per person at the gate. While at the event, guest can purchase an additional \$5 ticket for the Hogwarts Express.

NOVEMBER 5-6

BRONCBUSTER LITTLE BRITCHES RODEO

This is a National Little Britches Rodeo Association Sanctioned event. The rodeo is free and will take place at the Garden City Community College Horse Palace.

For more information contact Jim Boy Hash at 620-275-3205 or visit NLBRA.com.

NOVEMBER 5

BANNER ART AUCTION

Artists are invited to paint an original art piece on a banner to be hung from light poles along Main Street. After they come down, the banners are then auctioned and sold to the highest bidder. This is an evening celebrating our incredibly talented artists while raising funds for beautification projects in downtown Garden City. Auction will take place at the Flat Mountain Brewhouse. Tickets are \$55.

For more information, contact Downtown Vision at 620-276-0891 or visit their website at gcdowntown.com.

NOVEMBER 12

SIP N SHOP

Get in the holiday spirit by sampling a variety of festive beverages while shopping at your favorite Downtown stores. Wristbands will be sold for \$7 at the Downtown Vision Office, 120 E. Laurel Street, on the day of the event where ID's will be checked. You must be 21 or older to receive a wristband. Enjoy the afternoon of holiday shopping while sipping on delightful spirits.

For more information, contact Downtown Vision at 620-276-0891 or visit their website at gcdowntown.com.

DECEMBER 4

BURTIS MOTOR CHRISTMAS PARADE

Come join us at 6:00 pm for the colorful parade of lights down Main Street. Don't miss this fun and festive holiday event!

DECEMBER 9-10

GARDEN CITY NUTCRACKER

Steps Dance School presents the Nutcracker this holiday season. Admission is \$10 for adults and \$5 for children. Don't miss this spectacular performance from 6:00 pm to 8:00 pm at Clifford Hope Auditorium.

For more information contact Sabrina Rishel at 620-521-4555.

Lodging Amenities

	# of Rooms	Pool	Hot Tub	Gym	Restaurant/Bar	Laundry on Site	Pet Friendly*	Large Recreational Vehicle Parking**
AmericInn Lodge & Suites 3020 E Kansas Ave 620-272-9860 <i>americinn.com</i>	72	Indoor	•	•		•	•	•
Americas Best Value 1818 Commanche Dr 620-275-5095 <i>bestvalueinn.com</i>	76					•	•	•
Best Western Plus Emerald Inn & Suites 2412 E Kansas Ave 620-277-7100 <i>bestwestern.com</i>	60	Indoor	•	•	•	•		•
Clarion Inn & Conference Center 1911 E Kansas Ave 620-275-7471 <i>choicehotels.com</i>	109	Indoor	•	•	•	•	•	•
Comfort Inn 2608 E Kansas Ave 620-275-5800 <i>choicehotels.com</i>	62	Indoor	•	•		•	•	•
Continental Inn 1408 Jones Ave 620-276-7691 <i>continentalinngardencity.com</i>	54							•
Flamingo Hotel 1612 Jones Ave 620-276-7601 <i>visitgck.com</i>	29							•
Garden City Inn 1202 W Kansas Ave 620-276-7608 <i>gardencityinnhotelkansas.com</i>	43	Indoor				•		•
Hampton Inn 2505 E CrestWay Dr 620-272-0454 <i>hilton.com</i>	83	Indoor		•		•		•



AMERICINN BY WYNDHAM

3020 E Kansas Ave, Garden City • americinn.com • (620) 272-9860



For years the AmericInn by Wyndham in Garden City Kansas has been known for their extraordinary hospitality. Walking into the lobby you will experience it first-hand. Ruth, the front desk clerk who has been with the company for over fifteen years, always greets everyone with a warm and welcoming smile. Her main focus is making the guest know they are welcome and will be taken care during their stay. AmericInn is the ideal family-friendly hotel. An indoor pool, large meeting space and an exquisite fireplace with seating in the lobby, means you and your family will have plenty of room to spread out and feel like you are home.



If you are looking for a more intimate experience, they can help with that, too. Imagine planning a romantic getaway with your special someone. Just book the fireplace suite. Nothing says romance like opening up a bottle of bubbly in front of a fireplace.

AmericInn is also conveniently located near Schulman's crossing, a shopping center with fourteen retail and specialty shops. You will have ample space for all your shopping bags in your spacious room.



If you are a light sleeper, they have you covered. The AmericInn was built for the tired traveler with extra insulated walls so you will not hear your neighbors.

After a getting a good night sleep, head to the cozy breakfast nook to enjoy their delicious breakfast. You will have everything you need to start your day right. This will give you the energy to go out and spend the day exploring. With accommodations like AmericInn you will never want to leave. The staff at AmericInn by Wyndham Garden City looks forward to serving you during your upcoming visit.



HAMPTON INN

2505 Crestway Drive, Garden City • hilton.com • (620) 272-0454

In the heart of Garden City you will find the Hampton Inn by Hilton. The location makes it the perfect place to stay while exploring all that Garden City and Finney County have to offer. Whether you are here for a weekend with friends or a family vacation, the Hampton Inn has it all. No more dreading the usual hotel breakfast offerings because you'll start your day off right with a delicious breakfast buffet that changes daily. Hotel guests love the amazing options offered by the hotel.

After you have spent the day shopping at Historic Downtown Garden City or walking through Lee Richardson Zoo, you can come back and relax by the indoor pool. It's the perfect way to soothe sore muscles or help the kids work out some of that extra energy. The large windows let the sunshine pour in which makes for a cozy reading area. It's the perfect spot if you need some time away to yourself.

Hungry for dinner? On select days the Hampton Inn offers a free reception with heavy hors d'oeuvres. One review stated, "Lovely service and an awesome taco bar in the evening." If you are looking for something more substantial, International House of Pancakes is conveniently located right next door. You can also try one of the many locally owned restaurants that are nearby.

When you want to feel cared for wherever you go, it matters where you stay. The Hampton Inn has everything you need with the quality you expect from a Hilton property. The Hampton Inn in Garden City is ready to welcome you!



Lodging Amenities

	# of Rooms	Pool	Hot Tub	Gym	Restaurant/Bar	Laundry on Site	Pet Friendly*	Large Recreational Vehicle Parking**
Heritage Inn & Suites 1212 Stone Creek Drive 620-277-7477 <i>choicehotels.com</i>	95			•		•		•
Holiday Inn & Suites 2502 E Kansas Ave 620-275-5900 <i>ihg.com</i>	69	Indoor	•	•		•	•	•
Magnuson Red Baron Inn 2205 E Fulton St 620-275-4164 <i>magnusonhotels.com</i>	65					•		•
National 9 Inn 123 Honeybee Court 620-275-0677 <i>national9inngardencityks.com</i>	34	Indoor						•
New Sunflower Inn & Suites 1311 E Fulton St 620-276-2387 <i>visitgck.com</i>	107							•
Sleep Inn 1931 E Kansas Plaza 620-805-6535 <i>choicehotels.com</i>	60			•		•		•
Sunnyland Bed & Breakfast 501 N 5th 620-276-0500 <i>sunnylandbandb.com</i>	7							•
TownePlace Suites by Marriott 3510 E Kansas Ave 620-805-6717 <i>marriott.com</i>	120	Outdoor		•		•	•	•

* Pet deposit or fee may apply. Please contact the hotel directly for this information.

** This does not include large commercial vehicles or semis with large trailers. Please contact the lodging facility directly about these types of vehicle parking.



RESTAURANTS

Applebee's Grill & Bar	3030 E Kansas Ave
Arbys	1719 E Kansas Plaza
Baron's Steakhouse & Bar	1911 E Kansas Ave
Baskin-Robbins	1521 E Fulton St; 2505 Fleming St
Buffalo Wild Wings	1530 Lareu St #100
Burger King	2415 E Kansas Ave; 1601 Taylor Plaza W
Casa Mariachi	125 W Pine St
Central Cup Coffee House	517 N 8th St
Cinnabon	2875 E Schulman Ave; 1265 Solar Ave
Crispy Donuts	511 W Kansas Ave
Dairy Queen	114 W Kansas Ave
Daylight Donuts	201 E Kansas Ave
Dominos	2312 E Kansas Ave Suite C
Dragon Express	1118 N Taylor Ave
Drink It Milk Tea House	3102 E Kansas Ave Suite 200
El Canelo Tacos Y Mariscos	1110 Campus Dr #6473
El Clamatazo	707 E Fulton St
El Patron	606 W Fulton St
El Rancho	305 N Main St, Holcomb
El Remedio	1005 E Fulton St
El Zarape	2501 E Fulton St
Escarchadas Y Escamochas	1804 E Kansas Ave Suite B
Flat Mountain Brewhouse	207 N Main St
Freddy's Frozen Custard	3112 E Kansas Ave
Garden Café/The Scoop	2703 North Taylor Plaza/US-83
Garden City Steak House	1301 E Fulton St
Golden Corral	1727 E Kansas Plaza
Hannah's Corner	2605 N Taylor Ave
International House of Pancakes	2507 Crestway Dr
Jade Buffet	1505 E Kansas Ave
Jax Sports Grille	1907 E Mary St
Jimmy Johns	501 E Kansas Ave
KFC	2208 E Kansas Ave
La Cabana	110 W Kansas Ave

Motorcoach Parking?	Has Bar/Lounge?	Accepts Group Reservations?	Free Wifi?	Price Range?	Has Additional Meeting/Event Space?
•	•	•	•	\$\$	
•				\$	
•	•	•	•	\$\$	•
				\$	
•	•	•	•	\$\$	
•			•	\$	
	•	•		\$\$	•
				\$	
•			•	\$	
				\$	
				\$	
				\$	
•				\$	
				\$	
				\$	
				\$	
				\$	
				\$	
				\$	
				\$	
				\$	
				\$	
				\$	
				\$	
				\$	
•	•	•		\$\$	•
				\$	
•				\$\$	
•				\$	
•		•		\$	•
	•	•		\$\$	•
•		•		\$\$	•
•		•		\$\$	•
•		•		\$\$	
•		•		\$\$	
	•	•		\$\$	
				\$	
				\$	
				\$	



RESTAURANTS CONT.

La Estrella	305 E Kansas Ave
La Playa Dorada	212 W Fulton St B
Las Margaritas	1601 Buffalo Jones Ave
Little Ceasars	1810 E Kansas Ave
Long Johns Silvers Seafood	205 E Kansas Ave
Lovings Cakes	210 E Spruce St
Mariscos Puerto Nuevo	1107 N Taylor Ave
McDonalds	1613 E Kansas Plaza; 1106 N Taylor Ave
Napoli's Italian Restaurant	2215 S Air Service Dr
Ninja Sushi	416 N Main St
Old Chicago	1010 Stone Creek Dr
Osaka Sushi & Steakhouse	1660 Lareu St
Papa Johns	1016 N Main St
Patrick Dugan's	301 N Main St #5463
Pho Hoa One	713 E Fulton St
Pie Five Pizza	1110 Fleming St
Pinkys	2204 E Kansas Ave #1
Pizza Hut	1502 E Harding Ave #12; 301 E Kansas Ave
Plank's BBQ	912 E Fulton St
Popeyes Louisiana Kitchen	3108 E Kansas Ave
Rib Crib	1750 Lareu St
Scooter's Coffee	601 E Kansas Ave; 2517 Campus Dr
Sonic	1313 E Kansas Ave; 1212 Buffalo Jones Ave
Starbucks	2401 E Kansas Ave
Subway	3285 US-50; 1313 E Kansas Ave; 210 E Kansas Ave;
Subway	1320 N Taylor Plaza E; 3101 E Kansas Ave
Taco Bell	2408 E Kansas Ave
Tacos El Tapatio	1203 E Fulton St
Tequilas	2306 E Kansas Ave
Thai Arwan	902 E Fulton St
The Golf Club at Southwind	77 Grandview Dr
The Thirsty Dog	301 E Jones Ave, Holcomb
Time Out Sports Lounge & Grill	1319 N Taylor Ave
Traditions Soda & Sandwiches	121 Grant Ave
Wendy's	1403 E Kansas Ave

Motorcoach Parking?	Has Bar/Lounge?	Accepts Group Reservations?	Free Wifi?	Price Range?	Has Additional Meeting/Event Space?
				\$	
				\$\$	
	•	•		\$\$	
				\$	
				\$	
				\$\$	
				\$	
•			•	\$	
•		•		\$\$	
		•		\$\$	
•	•	•		\$\$	
•		•		\$\$	
				\$	
			•	\$	
		•		\$\$	
•			•	\$	
•		•		\$	
•		•		\$	•
•		•		\$\$	
•				\$	
				\$	
				\$	
				\$	
				\$	
				\$	
				\$	
				\$	
•	•	•		\$	
•		•		\$\$	
•	•	•	•	\$\$	•
	•	•		\$	
•	•	•		\$\$	•
				\$	
•			•	\$	



TRANSPORTATION

Garden City has many modes of transportation allowing you to further explore Garden City and Holcomb.

AMTRAK

The Amtrak's Southwest Chief makes morning departures and evening arrivals in the heart of downtown Garden City! **For reservations or a schedule, call (800) 872-7245 or visit amtrak.com/southwest-chief-train.**

GARDEN CITY REGIONAL AIRPORT

The airport is located 7 miles east of Garden City on Highway 50. With access to the world through the Garden City Regional Airport and American Airlines, there are several flights arriving and departing for Dallas/Fort Worth daily. **For more information on flights and schedules, visit fly2gck.com or aa.com.**



CITY LINK

Designed with the community in mind, City Links offers an affordable, reliable and convenient form of public transportation providing citizens of any age access to the entire city as well as a number of specified destinations outside the city limits. **For full route and fare information, visit finneycountytransit.org/city-link.**

TAXI SERVICE

If you prefer a taxi, you can contact our taxi company, Quality Cab. **There are two different locations and their numbers are (620) 275-8294 or (620) 276-3434.**

RENTAL CARS



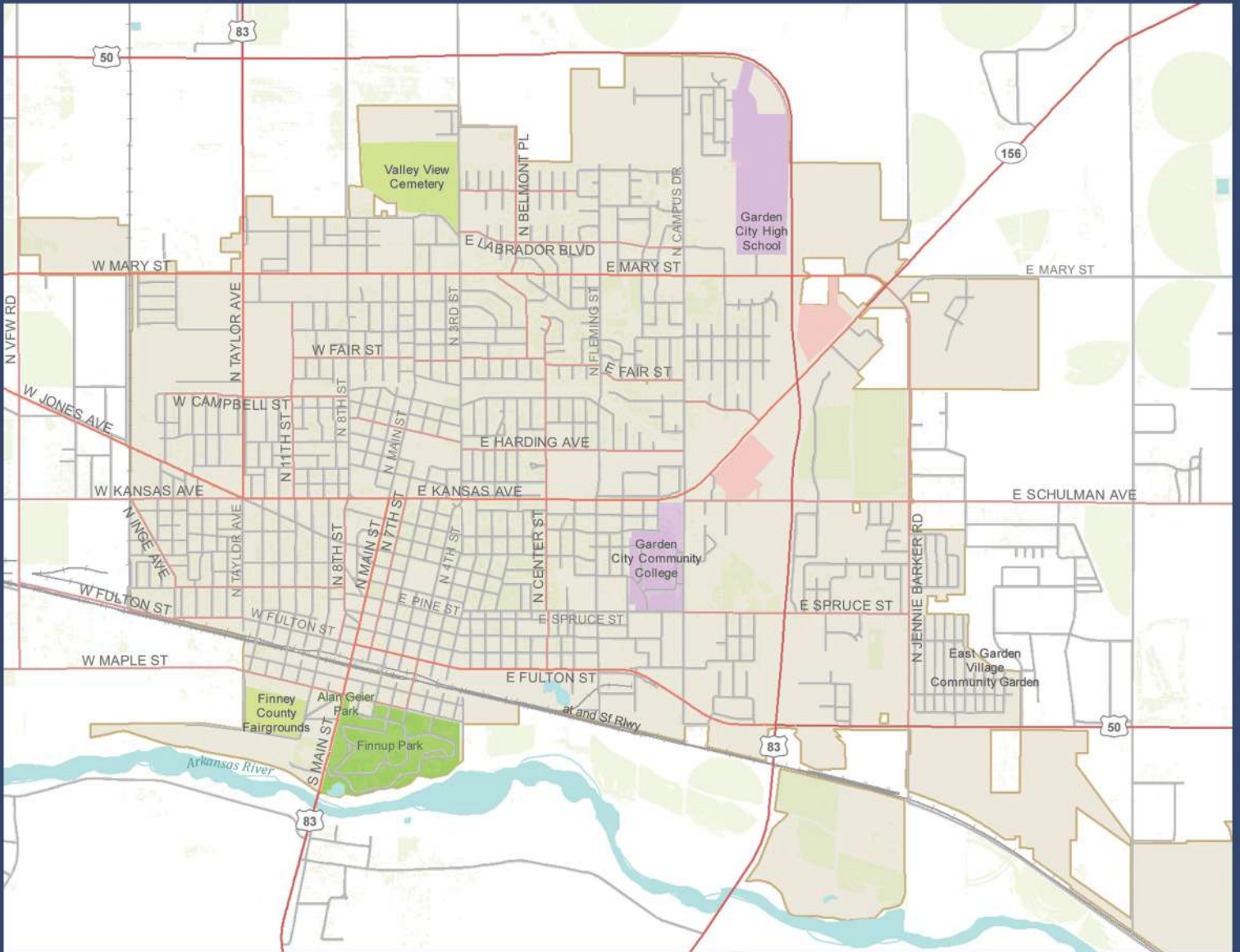
(620) 276-2113



(620)276-6884

RELOCATION PACKETS

The Garden City Area Chamber of Commerce offers a Relocation Packet designed to help those interested in relocating to our area make a smooth transition. Filled with valuable information, the relocation packet offers information on local tourist attractions, housing and rental properties, area businesses and so much more. *For more information or to request a packet go to gardencitychamber.net/pages/RequestaRelocationPacket or contact the Garden City Chamber of Commerce at (620) 276-3264.*



FOR MORE INFORMATION ON OUR WALKING OR DRIVING TOURS VISIT:

visitgck.com/things-to-do/walking-tours

visitgck.com/things-to-do/driving-tours

Pheasant Hunt Southwest Kansas and Win!



SOUTHWEST KANSAS ROOSTER ROUNDUP

The Rooster Roundup Pheasant Contest runs November, when hunting season begins, to January 31st and covers eight counties. If your bagged bird has one of the leg bands, you must bring the leg band to one of the approved locations to register your band and claim your prize! Drawing for the GRAND PRIZE will take place at the end of the contest. For more information on Rooster Roundup visit wildwestcountry.com.



SCAN ME



Sponsored by:

Mariah Fund
Bringing Kansas Tourism to Life



www.wildwestcountry.com