

SUMMER/FALL 2023

GARDEN CITY & HOLCOMB

# THE HUB

OF SOUTHWEST  
KANSAS

Your memory making destination!



Courtesy of Lee Richardson Zoo



Food Truck Friday



Garden City Charity Classic



Silver Sage Renaissance Festival

\*Front Cover by Jason Sawyer.

# CONTENTS

- 2 Shopping
- 4 Hidden Trail Brewing
- 5 Southwest Kansas Hunting
- 6 Tranquility Salon & Spa
- 7 Gravity Wellness Spa
- 8 Explore Nature
- 10 News from the Zoo
- 11 Kids Corner
- 12 The Arts
- 14 Water Fun
- 16 Golf
- 18 Get into the Action
- 20 True Crime Exhibit
- 21 Finney County Historical Museum
- 22 Historical Sites
- 24 History Highlight: Garcia
- 25 Annual Events
- 28 Upcoming Events
- 30 Lodging
- 34 Brews Cruise
- 36 Local Restaurants
- 40 Getting Around Garden City

## Welcome



We are excited to highlight just a small sampling of what you can expect when you visit the cities of Garden City and Holcomb. Our hope is that you will be adventurous as you delve deeper into the rich history that built this amazing oasis on the plains of Southwest Kansas. Our promise to you is to be ready to answer any question you may have and to assist you to the best of our ability in finding the experience you are looking for in Finney County.

We hope to see you soon!

**Roxanne Lansink**

*Finney County Convention and Tourism Director*



**5** Southwest Kansas Hunting



**14** Water Fun



**36** Local Restaurants

# *Downtown* SHOPPING

Garden City's Historical Downtown is the perfect place to shop 'til you drop! You can spend the whole day exploring all the shops and restaurants that downtown has to offer. Start your day by grabbing a coffee at Patrick Dugan's Coffee House or if you would like a healthy alternative head over to Roots Juice Co. & Wellness Studio for a delicious juice or smoothie. Then, stop by Corner on Main to shop for that perfect gift for someone special. SageHouse Bath & Body offers handmade bath and body products to make your next self-care day extra relaxing. Make sure to end your day trying one of downtown's many tasty eateries. There is something to fit everyone's appetite.

Along with so many great places to shop and eat, Historical Downtown has a beautiful park that holds numerous events throughout the year. At Stevens Park you'll find events like the Summer Concert Series, Food Truck Fridays, Art-in-the-Park, Beef Empire Days Celebration, band performances and more. The beautiful three-acre park is the place to get in on all the fun! With everything that the Historical Downtown has to offer, it is no wonder it is known as the "Heart of Garden City."

***For more information about Downtown Garden City or a list of retailers, visit [gcdowntown.com](http://gcdowntown.com).***





# SCHULMAN

## *Crossing*

Schulman Crossing Shopping Center has something to keep your whole family satisfied! It features delicious restaurants, numerous clothing stores, charming specialty boutiques and so much more. In 2013, Schulman Crossing broke ground along the U.S. Highway 83/50 Bypass at Schulman Avenue starting with Menards. Cato Fashion, Petco, T.J. Maxx, Dick's Sporting Goods, Hobby Lobby, Ross Dress For Less, Bling and Ulta Beauty opened in 2014. Dollar Tree, Buffalo Wild Wings and Rib Crib soon followed in 2015. The shopping center continues to grow with new shops opening yearly with the newest editions being Five Below and The Buckle. Construction is almost complete for Old Navy to join the shops at Schulman Crossing Shopping Center.

For some, shopping is a fun excursion during a trip. For others, shopping is the reason for the trip! No matter where you fall on that spectrum, Schulman Crossing Shopping Center has you covered.





# HAULIN' AXES & *The Paint Place*

209 N 7th Street, Garden City, Kansas

Garden City's Historic Downtown welcomes two exciting new attractions, Haulin' Axes and The Paint Place, to our vibrant downtown area!



Whether it's a memorable date night, a private family gathering, or a chance to impress your friends, look no further than the Haulin' Axes, the latest addition to Garden City's entertainment scene. With

their new expansion that includes a dedicated Nerf area, complete with over 50 Nerf guns and a plethora of Nerf bullets, they have the perfect appeal to any age.

At Haulin' Axes, you have the flexibility to either walk in or make an online reservation. Additionally, if you're planning an event and want to incorporate Haulin' Axes, they offer a mobile trailer service that brings the fun directly to your doorstep! Call (620) 290-4370 to book your reservation today!



The Paint Place goes beyond the ordinary canvas-painting venue offering an array of experiences. They provide a range of classes and even offer the convenience of bringing the fun directly to you. The Paint Place will pack up all the necessary materials and equipment, ensuring that you can enjoy creating art wherever you may be! Even if you don't consider yourself an artist, the Paint Place has got you covered. They offer a variety of options including pre-printed canvases and even wooden figurines, allowing you to explore your creativity in a way that suits your preferences and comfort level.

Ever dreamed of having a paint fight with your friends and family? Now you can make that dream a reality with the Paint Place's splatter room. Enjoy the exhilarating experience of throwing paint while leaving the cleanup duties to the staff. It's a fun-filled opportunity for unforgettable moments with family and friends. Call (620) 272-1241 today!

# HUNTING

*in Southwest Kansas*



From corner to corner, Kansas hunting opportunities seem nearly limitless. Kansas is home to some of the most extensive public hunting lands in the country. We have over 1,300,000 acres of public and private lands that are open to seasonal hunters. Arguably, some of the best are right here in Southwest Kansas, with a vast array of habitats, and a variety of different game species. Our hunting outfitters are also ready to help, whether you're a seasoned pro, or someone wanting to learn how to hunt.

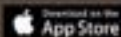
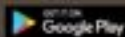
Our hunting culture and heritage runs deep, but you don't have to be a local to participate. In fact, we've become known as one of the largest travel hunter destinations, hosting hunters from around the world. Discover why more hunting enthusiasts are choosing Garden City as their base camp destination, and why you should too!

## Rooster Roundup

During hunting season, 600 pheasants will be banded and released in Southwest Kansas. If you are lucky enough to bag one of the banded pheasants, bring your leg band to one of the approved locations to register your leg band and claim your prize! For more information go to [visitgck.com](http://visitgck.com).



Download the official  
Kansas Department of Wildlife  
Hunting License App



SCAN ME

## HUNTING GUIDE

Riverside Ranch Outfitters  
2013 Pioneer Road  
Garden City, Kansas 67846  
(806) 206-9910

## TAXIDERMY

King Taxidermy  
10505 6th Road  
Ingalls, Ks. 67853  
[www.kingtaxidermy.com](http://www.kingtaxidermy.com)  
(620) 335-5424

Great Plains Taxidermy  
218 J E Humphreys Street  
Ashland, Ks. 67831  
(620) 635-4423

## GUN DEALERS

AAA Pawn Shop  
132 W. Kansas Ave  
(620) 276-4000

Postrock Trading Company  
1203 N Taylor Ave  
(620) 276-8171

Walmart Supercenter  
3101 E Kansas Ave  
(620) 275-0775

Wooden Nickel Pawn Shop  
1302 Taylor Plaza E  
(620) 276-6074

Working Man's Guns  
1106 McCoy Dr  
(620) 272-0803



# Tranquility Salon Et Spa

RELAX, RENEW, REVITALIZE

At Tranquility Salon and Spa their aim is to offer you a haven of relaxation and revitalization. Tranquility's mission is to pamper you from head to toe, enhancing your unique and natural beauty. They are dedicated to delivering the most indulgent services, ensuring the highest levels of customer

satisfaction. Rest assured, they will go above and beyond to exceed your expectations.

Tranquility's team consists of highly skilled and experienced professionals who are among the most qualified in the industry. With a wide range of services to choose from, they guarantee that you will leave feeling completely relaxed, at peace, and radiantly beautiful. Whether you desire a comprehensive day of rejuvenation and pampering with a massage and aromatherapy, a stunning new hairstyle, a shellac treatment, or a luxurious spa pedicure, you will find it all here.

**For more information or to book an appointment, go to [tranquilitysalonspa-gc.com](http://tranquilitysalonspa-gc.com) or call 620-276-3412.**







# Gravity

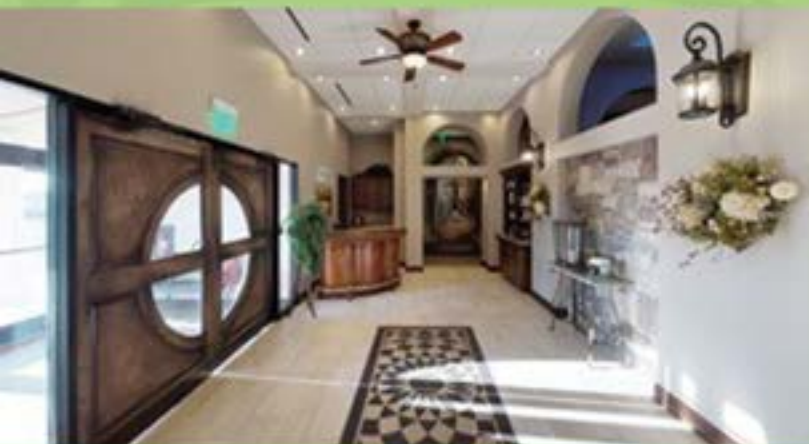
## WELLNESS SPA

Gravity Wellness Spa offers a complete rejuvenation of skin health through highly sought-after and efficient treatments in the field of aesthetics. In addition to their medical spa services, they proudly offer a wide range of day spa treatments designed to enhance your well-being. Pamper yourself with the soothing benefits of massage therapy, experience the deep relaxation of flotation therapy, indulge in invigorating body treatments, and treat yourself to a tranquil nail spa experience.

Owner Kristi, NP-C is a certified Family Nurse Practitioner and a Certified Laser Technician. With over 40 years of medical practice, Kristi possesses a deep commitment to helping clients lead healthier lives and ultimately achieve longevity and happiness. Her passion lies in inspiring and empowering her patients to make positive changes in their bodies, paving the way for a longer and more fulfilling life.

The friendly and knowledgeable staff at Gravity Wellness is dedicated to inspiring, educating, and delivering lasting results to each and every client. Gravity Wellness actively listens to their patients' goals and tailor precise treatment plans that cater to their individual needs.

***For more information or to book a spa treatment, visit [gravitywellnessspa.com](http://gravitywellnessspa.com) or call 620-260-2433.***





# EXPLORE NATURE

Explore nature in beautiful Finney County! Finney County has so many fun and interesting things to do that will either take you straight into nature or help you learn more about how our planet works and how we can preserve it. Whether you are traversing the grounds of Lee Richardson Zoo, learning about conservation, or checking out the majestic bison at the Sandsage Bison Range, there is something for everyone at any age. Here are just a few places in Finney that will get you outdoors!



## LEE RICHARDSON ZOO

Lee Richardson Zoo sits on 50 beautiful acres, and is truly the jewel of Garden City. Here you can enjoy lush landscapes, lovely walking and driving paths, playgrounds, picnic areas, and of course, hundreds of exotic and local species of animals. Whether you're touring Garden City with family, friends, or solo, the zoo is a wonderful place to spend the day. Open year-round and free to pedestrians, visitors are able to experience giraffes, lions, bears, primates, birds, and many more animals, native and exotic, at a gorgeous facility accredited by the Association of Zoos and Aquariums. Be sure to visit the Safari Shop while at the Zoo for a wide variety of souvenirs. The Zoo is free to walk through, while visitors viewing the Zoo by car pay a nominal admission.

*For more information go to [leerichardsonzoo.org](http://leerichardsonzoo.org).*



## FINNUP CENTER FOR CONSERVATION EDUCATION

This center is a state-of-the-art facility. The Finnup Center consists of two classrooms, one large meeting room/auditorium, and interactive television studio, and interactive learning stations introducing the wonders of nature to over 15,000 students of all ages annually. Bring your group and enjoy the wonders of nature.

**For more information, call (620) 276-1250 or visit [leerichardsonzoo.org/finnupcenter.php](http://leerichardsonzoo.org/finnupcenter.php).**



## NATURE EXPLORE CLASSROOM

Garden City's own Nature Explore Classroom is in a secure area just outside the Finney County Library. There, kids will find The Grassy Knoll, The Gathering Tree, Home of the Gnome, River Ramble, Sunflower House, Mulch Gulch, Secret Path, Dream Building, Melody Meadow, and Art Island. Each of these places provides a unique opportunity for a child to pursue a specific type of activity, encouraged by colorful signs and natural objects.

**For more information, call (620) 272-3680.**



## SANDSAGE BISON RANGE

Located in the sandsage prairie, the bison range remains one of the few tracts of native sandsage prairie not converted to irrigated cropland. The presence of several tall grass species and sand sagebrush makes this southern plains ecosystem truly unique. Sandsage Bison Range is home to the oldest publicly owned bison herd in Kansas. Interesting critters that also call the sandsage prairie home include the lesser prairie chicken, spotted ground squirrel, kangaroo rat, scaled quail, black-tailed jack rabbit, mule deer, and western hognose snake. Reservations required for tours to see buffalo and other animals on the sagebrush prairie and wildflower tours.

**For more information, call (620) 276-8886.**





## NEWS FROM



Get up close and personal with some of your favorite animals at Lee Richardson Zoo with Animal Encounters! Animal Encounters allow zoo guests to purchase "keeper approved" food and experience a close encounter with some of the zoo's animal ambassadors.

Every Saturday and Sunday (weather and animal permitting), visitors can choose from three different encounters:

**Sloth Bear Encounter** - 11:30 am to Noon

Cost: \$3 for 1 or \$5 for 2

**The Giraffe Encounter** - 1:30 pm to 2:30 pm

Cost: \$2 for 1 or \$5 for 3

**The Rhino Encounter** - 2:30 pm to 3:00 pm

Cost: \$5 for 1 or \$10 for 3

The cost for the animal encounters supports the care of all animals at Lee Richardson Zoo and helps maintain their zoo as a world class accredited facility. Make sure to check out the daily zoo keeper chats as well. Keeper chats are opportunities for visitors to interact with the animal care professionals. These are free to all guests and a schedule of chats can be found at [leerichardsonzoo.org](http://leerichardsonzoo.org).



**For more information, visit [leerichardsonzoo.org](http://leerichardsonzoo.org) or call (620) 276-1250.**

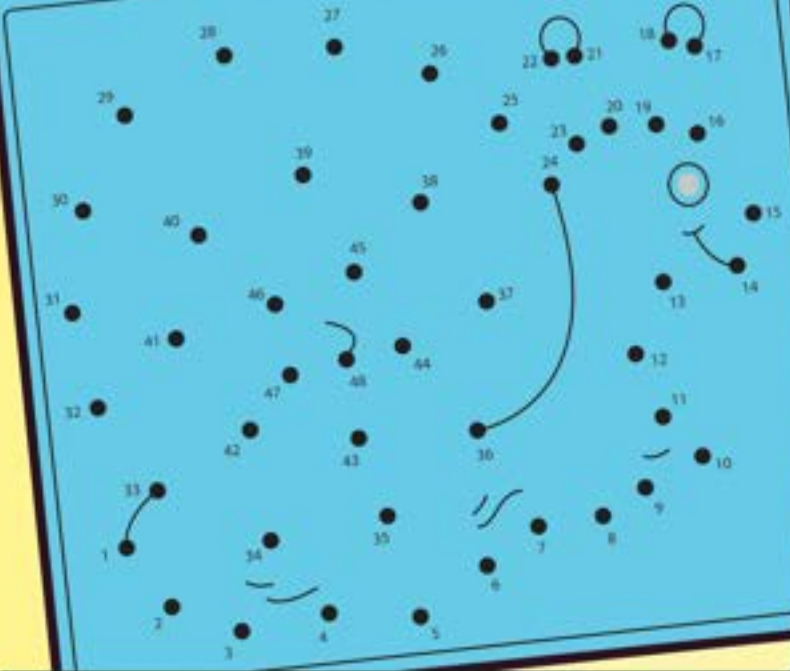
# Kids Corner



- What did the mama cow say to the calf?  
A: It's pasture bedtime!
- What kind of dog does a magician have?  
A: A Labracadabrador!
- Where do cows go on Friday nights?  
A: They go to the moo-vies!
- What do frogs order at fast-food restaurants?  
A: French flies!
- What do you call a cheese that's not yours?  
A: Nacho cheese!

## Dot - To - Dot Discovery #3

Connect the dots to discover the animal who has left this clue, then color.



## WEATHER WORD SEARCH

- |          |           |
|----------|-----------|
| SUNSHINE | HAIL      |
| CLOUDS   | THUNDER   |
| DRIZZLE  | WIND      |
| FOG      | LIGHTNING |
| SNOW     | FROST     |
| MIST     | STORM     |

Clues may run forwards, backwards, diagonally, up or down. Some may overlap or even be backwards!!

R F Y D R I Z Z L E R D C V S  
 E M W Y B R C E X W Z D F U U  
 D O I L A W C X F V B H O K N  
 N R N Y D G Y L B G F T G E S  
 U C D S X E R U O P A S E D H  
 H A W R T M N J U U K M N B I  
 T J I K O R P M N B D C E W N  
 X Q A Z B O M J Y H G S F R E  
 A L I G H T N I N G T Y H U L  
 F M T X W S L P D X Z E R T L  
 Q D M X T H I T W T R D W V P  
 Z V N J R D Q S G K J O B G F  
 C M I S T P U O F C N E S X Z  
 B G T R F C D R W S X Z A Q W  
 M L P I U G F F W S A H A I L



# The Arts

## GARDEN CITY ARTS

Garden City Arts is a local, non-profit arts organization showcasing a variety of mesmerizing exhibits. It is an exceptional place to peruse captivating collections, catch a community theatrical performance, and support local Kansas artists. Since its founding in 1989, Garden City Arts has strived to bring more arts and humanities events to SouthWest Kansas.

Garden City Arts offers an intriguing array of fine art, photography, textile and other revolving art exhibits for all tastes. In addition, the center conducts art classes for all ages and has a delightful gift gallery, featuring one-of-a-kind art and jewelry.

If you are only in town for a few days, be sure to check out everything that's going on over at Garden City Arts. View their calendar of events for all of their in-person and virtual exhibits and family-friendly activities. From watercolor workshops to Art in the Park, the crew at Garden City Arts is always planning exciting cultural events.

Garden City Arts is located at 318 North Main Street in Garden City. The gallery is open Tuesdays through Saturdays from 1 pm until 5 pm. General admission is free.

***For more information about Garden City Arts please visit: [gardencityarts.org](http://gardencityarts.org).***



### BOY SCOUTS OF AMERICA JESSIE MONTES ART GALLERY

Jessie Montes began producing 3 dimensional sculptures, landscapes, portraits and abstract design pieces, using ¼ inch strips of cardboard glued edgewise on a cardboard base in 1990. Acrylic paint is used on most of his pieces, providing vibrant, exciting art. In 2017 Duane and Orvileta West gifted their 53 piece collection of Jessie Montes art to the Sante Fe Trail Council. The gallery is open Monday - Friday, 9am to 5pm, and is located at 402 Fulton Street in Garden City.

*For more information, call 620-275-5162.*

### MERCER GALLERY

The Mercer Gallery at Garden City Community College is committed to offering a rich and diverse cultural experience to the campus community as well as to the greater region. The Mercer Gallery offers people a transformative opportunity to experience life as depicted by regional, national, and international artists. It is their goal to provide exhibitions which are inclusive of a variety of media and concepts. They provide exhibitions that will enhance lifelong experiences.

Located in the west wing of the Joyce Fine Arts building at 801 Campus Drive in Garden City. The Mercer Gallery is open Monday through Wednesday from 9 am to 4 pm, Thursdays from 9 am to 10 pm, and Fridays from 9 am to 3 pm during the regular academic year (closed Summer term and other breaks). Admission is free.

*For more information, call 620-276-9644.*





# WATER FUN FOR THE WHOLE FAMILY



Parrot Cove Water Park is a 36,000 square foot paradise, with four water slides, a tropical lagoon, a lazy river, a rock-climbing wall, a gamers' palace, and much more. Heated to a comfortable 84 degrees and featuring a 40-foot Riptide Rush and a Screamin' Tsunami, exciting adventures await for the whole family. For those in search of something more laid back, the Key Lime Creek lets you drift more than 500 feet around the whole of Parrot Cove.

Show off your gaming skills in the big game room where you'll find old-time classics as well as some more modern challenges to keep you guessing. Enjoy the luxury of playing without the need to fumble with coins and dollar bills by loading your game card. They are open to the public on Fridays, Saturdays and Sundays.

There's nothing like hours of water adventures to work up an appetite. Luckily, Parrot Cove Water Park has the answer with its Snack Shack. They have bagged chips, individually-packaged

pastries, slushies, bottled drinks, hot dogs, nachos and other snacktime favorites. Parrot Cove also has a dedicated snacking area that oversees the water park so parents can keep an eye on things at all times.

**For more information, go to [swimatparrotcove.com](http://swimatparrotcove.com) or call (620) 805-5303.**







## GARDEN RAPIDS AT THE BIG POOL WATER PARK

Garden Rapids at the Big Pool built in 2021 includes a competition pool, zero depth entry, a lazy river, slides, a leisure pool, a Splashtacular stand-up-slide, and fly high slide! The ICONIC elephant slide that was part of the world famous "Big Pool" has a new home!! You are now able to slide down memory lane before visiting the Garden Rapids facility and during the off-season! Each feature at Garden Rapids is animal-themed, like their neighbors at Lee Richardson Zoo. You can hang out at Lion Lounge or float down Otter Rapids, the lazy river, or try out Dolphin Dive. Garden Rapids has your whole family covered for fun under the sun!

**For more information, call (620) 276-1160.**

Daily Rate - \$3

Open During Season:

Monday - Saturday 1pm to 8pm

Sunday 1pm to 6pm



## SONNIE BAIRD SWIMMING POOL

The Sonnie Baird Swimming Pool is named after Sonnie Baird, the former director of Holcomb Recreation who retired in 2007. In 1979, Baird started her career in Holcomb and was a tremendous asset for the community throughout her 27 years of service. The pool features plenty of lounge chairs, a thrilling slide, a snack bar, and a kiddie pool. Plenty of fun in the sun for the whole family.

**For more information, call (620) 277-2610.**

Daily Rate - \$2 (rates apply to all persons - swimmers & non swimmers)

June Pool Hours:

Monday - Thursday 1pm to 6pm

Friday - Sunday 1pm to 5:30pm

July & August Pool Hours:

Monday - Thursday 2pm to 6pm

Friday - Sunday 2pm to 5:30pm

4pm break/whistle:

If the attendance is at 20 patrons or less the pool will close for the day.





## **BUFFALO DUNES GOLF COURSE**

Buffalo Dunes Golf Course is ranked one of the top ten municipal golf courses in the United States. It has been recognized by Golf Magazine and Travel & Leisure Magazine as places to play and best bangs for the buck. Challenging, enjoyable and affordable, Buffalo Dunes will give you a little bit of a Scottish feel as it is nestled among the historic sand hills six miles south of Garden City. Southwest Kansas offers a four season climate and golf can be played throughout the year, weather permitting. Buffalo Dunes is the host course to the prestigious Garden City Charity Classic, a Symetra Tour event. Among the golfing greats who have walked the fairways of the dunes are U.S. Open champions Steve Jones and Lee Janzen, and British Open champions Tom Weiskopf and Stewart Cink.

***For more information about the course, go to [buffalodunes.org](http://buffalodunes.org).***

## **GOLF COURSE AT SOUTHWIND**

There's a reason for the name at Southwind Country Club. The course was opened in 1980 with one overriding factor in mind. In Southwest Kansas the wind blows from the south often and hard. Taking that into account, the course was laid out in the rolling sand hills south of Garden City to take advantage of that and it worked! Southwind has become a favorite amongst touring golf professionals.

***For more information about the course, go to [southwind-gc.com](http://southwind-gc.com).***



The Epson Tour (formerly the Symetra Tour) is the official qualifying tour of the LPGA Tour and enters its 42nd competitive season in 2022. With the support of the entitlement partner Epson, the Tour's mission is to prepare the world's best female professional golfers for a successful career on the LPGA Tour. In the last decade, the Epson Tour has grown from 15 tournaments and \$1.6 million in prize money to over \$4 million awarded across 20+ events in 2022. With more than 600 graduates and alumnae moving on to the LPGA Tour, former Epson Tour players have won 458 LPGA titles.

The Epson Tour schedule runs from March through September and has more than 300 players competing from around the world. The top 10 players from the LPGA Futures Tour money list earn LPGA membership for the following year.

The Garden City Charity Classic is the Regions only professional ladies golf tournament. Lady golfers from around the world gather in Garden City to battle for the right to earn their LPGA card. The Tournament locally facilitates ladies high school's golf programs in the 22 counties of Southwest Kansas. The Tournament is in its 8th year and has hosted the only back-to-back tournament in the history of the Tour. Several countries and all 50 states have participated in the Garden City Charity Classic!

**For more information or to volunteer, call (620) 276- 0607.**



The Southwest Kansas Pro-Am is the longest running professional golf tournament in the State of Kansas. The Southwest Kansas Pro-Am began in 1979 as a traveling tournament. Each year it was held at Dodge City, Liberal, or Garden City, Kansas until it was decided the two beautiful renowned golf courses in Garden City should be the permanent home of the Pro-Am. Two of Kansas' premier golf courses, The Golf Club at Southwind and Buffalo Dunes, play host to this event.

The Southwest Kansas Pro-Am Golf Tournament benefits the Newborn Intensive Care Unit at St. Catherine Hospital in Garden City. These funds provide necessary dollars to maintain the high level of care and education required for the Level II, seven bed NICU department.

**For more information, go to [swksproam.com](http://swksproam.com).**



## GET INTO THE ACTION

Ready. Set. Go! If you are looking for activities that are full of action and fun for the whole family, Finney County has you covered! From racing and paintball to escape rooms and music, we have it all.

### AIRPORT RACEWAY

During warm summer nights, the Airport Raceway is a popular destination for the whole family. Ten miles east of Garden City, the Airport Raceway holds weekly events for the racing community. The 1/6-mile raceway is home to Dwarf and Midget car races. The short inner track is for go-karts and junior sprint cars. It is sure to get your heart racing whether you are a driver or an enthusiast in the stands.

For more information, visit [airport-raceway.com](http://airport-raceway.com).





## ESCAPE THE CLOCK

Imagine entering Alice in Wonderland. Everything looks fine until you realize the rabbit hole is closing. Now, you and your friends need to figure out how to escape before time runs out. You aren't sure what's going to happen if you don't, but you also don't want to stick around to find out. The clues you need to escape are right in front of you, you just need to look very, very carefully...Will you escape or be trapped in Wonderland forever?!? Garden City's Escape the Clock offers five rooms, right on Main Street! It is easy to reserve a space and reservations can be made online. Escape the Clock offers special pricing for professional team building and large parties.

*For pricing, scheduling, and room descriptions, call (620) 805-5064 or visit [escapetheclockgc.com](http://escapetheclockgc.com).*



## FLAT MOUNTAIN BREWHOUSE

Flat Mountain Brewhouse is Garden City's first and only brewery. Established in 2019, they are a family friendly establishment that specializes in making unique craft beers for a unique community. With live music, comedy shows and open mic nights you will be entertained while experiencing "The Little Brewhouse on the Prairie!" Flat Mountain Brewhouse has 12 rotating taps and a killer food menu. The historic style brewery offers you the feel of having great beer in an upscale environment, without the upscale prices!

*For more information about upcoming events, call (620) 260-2886 or go to [flatmountainbrewhouse.com](http://flatmountainbrewhouse.com).*



## SAINTS OF FUN

Saints of Fun Paintball is the place to go for an unforgettable day of fun with friends and family. They provide fun for all ages with paintball, laser tag and zorb balls. All equipment is provided, including paintballs, field entry, air (HPA), gun rental and mask. Laser tag is similar to paintball but allows for unlimited ammo and does not require a facemask. Zorb Balls can be rented from Saints of Fun for a day of non-stop entertainment.

*For more information, call (620) 521-7889 or visit [saintsoffun.com](http://saintsoffun.com).*



## True Crime

### Solving Notorious Cases from Finney County's History

The True Crime Exhibit at the Finney County Historical Museum is a riveting true crime exhibit that incorporates evidence, artifacts and information showing how local and area law enforcement officers solved the crime spree of the Fleagle Gang, bank robbers and murderers of the 1920s who were once as widely known as Baby Face Nelson, John Dillinger, Bonnie Parker and Clyde Barrow. The exhibit also educates visitors about the infamous 1959 Clutter murder case, which inspired author Truman Capote to produce the acclaimed novel, "In Cold Blood," about the deaths of the Herb and Bonnie Clutter family at the hands of prison parolees Richard Hickock and Perry Smith.

This exhibit showcases forensic evidence from the both cases that was used in obtaining convictions that led to the execution of the perpetrators. The incriminating evidence in the exhibit includes a boot worn by Smith the night of the Clutter murders, which left a print linking Hickock and the wearer to the killings; and car window glass on which gangster

Jake Fleagle left his finger print in the commission of a murder after robbing the First National Bank in Lamar, Colorado. That print, one of the first used in an FBI-related investigation, linked Jake and Ralph Fleagle, as well as accomplices George Abshier and Howard "Heavy" Royston, to the fatal heist.

Additional items were added in 2020 and include the judicial robe and chair used by Judge Roland Tate in the Clutter case, and eight guns wielded by the Fleagle Gang in their decade of robberies and murders. In all, the exhibit includes more than 20 additional artifacts and approximately three dozen historic photographs.

"True Crime – Solving Notorious Cases from Finney County's History," opened in 2018 and is one of more than a dozen exhibits in three galleries of the museum. You don't want to miss this intriguing exhibit.

**For information, contact the Finney County Historical Museum at (620) 272-3664.**





## Finney County Historical Museum



History lurks around every corner in Finney County, Kansas and the Finney County Historical Museum is THE place to learn about Garden City and Holcomb's cultural past. While walking through the halls, you'll be immersed back in time to the days of

the Fulton Brothers and icon CJ Buffalo Jones, a co-founder of Garden City and buffalo breeder. Learn all about the Spirit of the Plains and how Finney County got started and has thrived.

There are so many diverse and interesting exhibits at the Finney County Historical Museum. Become a part of history by dressing up in historic clothes at a mock up of the Windsor Hotel like in its glory days. You will also find the world's largest hairball found in a cow's stomach. The museum presents various long-term and temporary exhibitions that draw a huge variety of visitors curious about the social, cultural and natural history of Southwest Kansas.

The museum also includes the historic William D. and Luticia Fulton House, dating back to 1884. The Fulton House, home of town founders, William D. and Luticia Fulton, is one of the few remaining houses from the earliest days of Garden City. Built in 1884, William and Lettie's last home is a delightful one-half story national folk style house surrounded by charming flower gardens. The living room and dining room have been restored and furnished with period furniture and accessories to make you feel like you've stepped back in time. Make sure not to miss the front parlor houses and an informative exhibit about early Garden City and the four founding families.

One of the finest examples in Kansas of a one-room schoolhouse, the 19th Century Pleasant Valley School was moved to Fynnup Park in Garden City in the 1970s and is now located near the museum. Built in the 1890s, it served as a social center as well as a school for many decades.

If you want to dig even deeper into Finney County's or your own family history, Finney County Historical Museum is home to the Leola Howard Blanchard Research Library. The research library is an excellent research center and offers primary sources for the history of Finney County and assistance with family genealogy. The library contains a large photograph collection, archives and manuscript material, original newspapers, maps and microfilm of early day publications.

After browsing the over 100,000 artifacts the museum has to offer, make sure to stop by the unique gift shop for your Garden City, Kansas souvenir. Additionally, the museum sponsors numerous events throughout the year and operates a fast-growing education outreach program. There is a meeting room available for public booking.

**For more information, call (620) 272-3664, check out Facebook or visit [finneycounty.org](http://finneycounty.org).**

Winter Hours: Monday - Sunday 1pm - 5pm

Summer Hours:

Monday - Saturday 10am - 5pm & Sunday 1pm - 5pm

Admission: FREE

# HISTORIC SITES

From Native American roots to buffalo hunters and war veterans, Finney County is a diverse melting pot of immigrants. No matter the reason for your visit to the area, take some time to learn about Finney County's rich and storied past. Here are a few of the must see historic sites around the area!

## FULTON HOUSE

The William D. Fulton family moved into this house from their homestead in September of 1884. William and his brother, James, were the first to file on land in (Sequoyah) Finney County in 1879. Located south of the museum, the home was relocated in 2004 from its original location at 404 North 7th. The restored Folk Victorian home is surrounded by period correct floral gardens and filled with period correct furnishings.

**Free guided tours are available by calling (620) 272-3664.**



## SUNNYLAND BED AND BREAKFAST

Sunnyland was the three-story retirement home of David R. and Maretta Menke from 1909 until they sold the property in 1917 to retire in California. David Menke was born in Pittsburg, Pennsylvania in 1948 and married Maretta Urie in 1869. With three small children, Mr. and Mrs. Menke started for western Kansas in early summer of 1878 and arrived in Garden City on August 20, 1878. He opened the first store, was the first postmaster and was also County Treasurer. Sunnyland is a 1909, Queen Anne style, three-story brick home. With its wraparound porch, original woodwork and fireplaces, period furnishings, open stairway and third level ballroom, Sunnyland is a must see masterpiece.

**For tour information or to make a reservation, call (620) 276-0500.**

*To learn more about our historic treasures, please go to [visitgck.com](http://visitgck.com).*





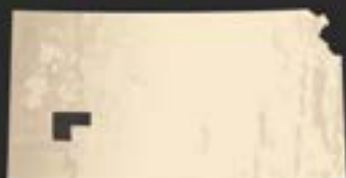
## WINDSOR HOTEL

Constructed in 1888 by John A. Stevens, this four-story hotel was among the first buildings built in Garden City. Construction began in March 1887 ending in the spring of the following year. The project cost Stevens nearly \$100,000 and the hotel was built using local materials. The hotel has 125 rooms and even had an access connecting it to the Stevens Opera House which was also built by John Stevens. Nicknamed the "Waldorf of the Prairie", the hotel was reputed to be the largest between Denver and Kansas City. In 1972, the Windsor Hotel was added to the National Register of Historic Places by the US National Park Service. The Windsor closed in early 1977, but you can still see it by booking a tour. Tours are available in the summer months.

*For more information about tours, email [fcpa.ks@gmail.com](mailto:fcpa.ks@gmail.com).*



# HISTORY HIGHLIGHT



## Garcia Breaks Barriers & Builds Equality



From humble beginnings as a son of immigrant workers, Garcia left his mark on Garden City by becoming a dedicated and respected community leader that brought about change and promoted equal opportunity. Dionicio Campos "D.C." Garcia was born in Holcomb on April 19,

1922 to immigrants Jose Campos Garcia and Maria Rosalinda Campos. At two years old, he moved to Garden City.

With only a 7th grade education, he spent the four years after working various jobs to help his parents financially including a laborer in the beet fields, yard work, and shining shoes. In 1941, the nineteen-year-old Garcia went searching for new opportunities in the California lemon fields, but with World War II raging in Europe he ended up like many others his age in the country and was drafted by the United States Armed Forces in 1942. However, during basic training, Garcia realized that his struggle with asthma would keep him from entering the service and he was given an honorable medical discharge. Garcia returned home to Garden City and found ways to help the war efforts by working for engineers and contractors on the construction of the Garden City Army Airfield. Once the base was completed, he continued working at the

base in the motor pool parts and service department, and as a chauffeur. Also during this time, he met and married Irene Rodriguez, a resident of Dodge City, on September 22, 1943 and couple went on to raise ten children.

Garcia's passion for his community and helping immigrants in the Garden City area continued to grow and people were taking notice. In 1949, the Garden City postmaster offered Garcia a job assisting seasonal laborers from Mexico with mail and money orders; he worked for the post office for 27 years. After receiving permission from the postal department, Garcia ran for city commission in 1971. Though new to politics, Garcia enjoyed success against his opponent in the April election. Elected mayor in April 1973, he was elected Garden City's first Hispanic mayor and served a term of one year. Garcia was very active in advocating for the entire Mexican American community and served on many civic and school committees, as well as participated in family and church activities. He fought very hard for the civil rights of Mexican American veterans and was awarded the 1971 Certificate of Merit from the GI Forum and the 1981 Special Recognition Plaque for his work in making sure Mexican American veterans received the benefits that they were entitled to for their service.

Garcia's wife, Irene, was also an avid advocate that taught citizenship classes and broadcast a radio program in both English and Spanish for many years. She decided to try her own hand at the political scene and ran for the Board of Education of USD #457. In 1985, she became the first Hispanic to ever be elected to the board and served until 1987.

D.C. Garcia and Irene Rodriguez Garcia worked over five decades to promote equal opportunity in employment, housing and education, improve ethnic relations and eliminate discrimination. Both husband and wife earned extensive recognition for their lifetime of contributions to Garden City. Busy to the very end, Garcia passed away October 16, 1985 from complications due to asthma and a heart condition.

**To learn more about the Garcia family or others that have impacted Finney County's history, visit the Finney County Historical Museum or call (620) 272-3664.**



# ANNUAL EVENTS

For a list of all upcoming events, check out Annual Events at [visitgck.com](http://visitgck.com)

## **MARCH**

### **ANTIQUe APPRAISAL FAIR**

This is a live, all-day event, styled like the Antiques Road Show television program, during which participants bring heirloom items to be evaluated on stage by a panel of antique dealers and other experts. The event raises funds for the Finney County Museum, while providing history related information and entertainment for participants, spectators, and collectors.

*For more information, contact Steve Quakenbush at (620) 272-3664.*

## **APRIL**

### **GARDEN CITY CHARITY CLASSIC**

Watch the top 144 pro women golfers from all over the world compete on this leg of the Symetra Tour where the top ten will earn their LPGA cards.

*For more information, contact Jason Hase at Buffalo Dunes (620) 276-1210.*

## **MAY - JUNE**

### **BEEF EMPIRE DAYS**

Beef Empire Days is an eleven day celebration, educating the community about the beef industry. Parades, parties and tastings in the park add to the enjoyment of the week.

*For a schedule of events, visit [beefempiredays.com](http://beefempiredays.com) or call (620) 275-6807 for more information.*



## **JUNE**

### **SOUTHWEST KANSAS PRO-AM**

For over 35 years, Garden City has been the host for Kansas' longest running professional golf tournament, The Southwest Kansas Pro-Am. Lasting almost a week, the Pro-Am consists of many different events along with the main tournament, proving that there is something for everyone.

*For more information, contact Paige Kraus at (620) 272-2177.*

## **JULY**

### **ANNUAL FLEA MARKET FESTIVALS OF ANTIQUES, COLLECTIBLES, ARTS & CRAFTS**

This is an outdoor festival of antiques, collectibles, arts, crafts, and food, drawing with vendors from multiple communities to offer goods to a crowd of shoppers from much of Kansas, plus two neighboring states.

*For more information, contact Steve Quakenbush at (620) 272-3664.*



## **AUGUST**

### **TUMBLEWEED FESTIVAL**

The festival features professional groups playing jazz, rock, Latino, South African, Caribbean, Zydeco, folk, bluegrass, and a Capella. It hosts local and regional musicians as well as a stage and huge tent devoted to children's entertainment and art.

*For more information, visit the festival website at [tumbleweedfestival.com](http://tumbleweedfestival.com). You can also visit their Facebook page at [facebook.com/tumbleweedfestival/](https://facebook.com/tumbleweedfestival/).*





## SEPTEMBER

### GARDEN CITY COMMUNITY MEXICAN FIESTA

Garden City Community Mexican Fiesta is always the second Saturday in September in our beautiful downtown Garden City. The "La Fiesta" came to being in 1926. Some of the activities progressed and included the raising of the American and Mexican flags in "la colonia Mexicana", the parade, the crowning of the queen, folkloric dancing, ball games and rifas (raffles).

*For more information visit [gcfiesta.org](http://gcfiesta.org).*

## SEPTEMBER

### FALL FEST

Fall Fest combines local and area arts and crafts, folks with food vendors offering an international assortment of tasty samples, talented musicians and much more!

*For more information, contact Downtown Vision at (620) 276-0891 or visit their website at [gcdowntown.com](http://gcdowntown.com).*



## OCTOBER

### BOO! AT THE ZOO

The evening offers local families a fun and safe trick-or-treat experience, while also supporting zoo improvements. Passes are \$10 per person, or \$5 in advance. Member's benefits include the trick-or-treat trail and themed train experience. Advanced gate and members gate opens at 4p.m. Regular admission starts at 5 p.m.

*For more information, contact Jessica Norton at (620) 276-6243.*



## DECEMBER

### DOWNTOWN EVENING CHRISTMAS PARADE

Come enjoy an evening of beautiful Christmas lights on floats as they drive down Main Street for the annual Evening Christmas Parade!

*For more information, contact Melissa Gallegos at (620) 276-0891.*

# Finney County UPCOMING EVENTS



**JUNE 2-11**

## **BEEF EMPIRE DAYS**

Beef Empire Days lasts ten days with over twenty events that attract visitors from all over the state of Kansas and surrounding states. The festival, which is one of the largest beef festivals in Kansas, is unique due to the combination of celebration, education and promotion that the events/activities provide the community.

*For more information and a complete listing of the scheduled events, go to [beefempiredays.com](http://beefempiredays.com).*

**JUNE 10-11**

## **SILVER SAGE RENAISSANCE FESTIVAL**

Come see the Vikings, Lords, Ladies, acrobats, pirates, knights in armor and so much more at Western Kansas's ONLY Renaissance Festival! Shop costumed vendors, learn from armored knights, hear stories from Vikings, sample from fine merchants or walk with the fairies at Silver Sage. All the action happens both days from 10 am - 6 pm at Finnup Park. Admission is \$5 for general admission. Children 5 and under are free.

*For more information, please contact Jacque Swartout at 909-289-9745.*

**JUNE 23-25**

## **JIM CLANTON MEMORIAL BASEBALL TOURNAMENT**

Youth Baseball Tournament Division: 19U, 16U, 15U, 14U, 13U, 12U, 11U, 10U and 9U This will take place at Clint Lightner Field, Peebles Complex, William Stadium and Fansler Field. Admission is \$5 for adults and \$3 for youth tickets.

*For more information, contact Robert Fossum at 620-276-1200.*

**JUNE 24**

## **ART IN THE PARK**

Please join us as we celebrate the 55th year of Art in the Park! Food vendors, fine artists and craftsmen will have their products on display in Stevens Park from 10 am - 4 pm. While you are shopping enjoy live musical and visual performances throughout the day. Before you leave, make sure you check out the artist demonstrating their skills in the demo tent and a wide range of free activities for families and adults.

**JUNE 30**

## **THE GREAT RACE & CAR SHOW**

The Great Race will be stopping in Garden City. Cruiser will have a car show in Stevens Park and the Racers will have their cars lining Main Street from 4 pm - 8 pm. Come down and meet the drivers, see the cars and have a wonderful time!

**JULY 8**

## **FLEA MARKET FESTIVAL OF ANTIQUES, COLLECTIBLES, ARTS AND CRAFT**

This outdoor festival of vendors offers antiques, collectables, arts, crafts and food in the sun and shade of Garden City's Lee Richardson Zoo. The festival will be from 8 am - 2 pm.

*For more information or to reserve a vendor space, contact Steve Quakenbush at 620-272-3664.*



## Check out our full list of events at [visitgck.com](http://visitgck.com)!

**JULY 8**

### **JUNGLE RUN CAR SHOW**

The Jungle Run VIII Auto Show will take place on the West Green of the beautiful Lee Richardson Zoo. All make/model vehicles are welcome. Lee Richardson Zoo will open at 8 am for pedestrians and drive-through traffic with no early admittance. Vehicle registration begins at 8 am at the gazebo on the West Green. Voting will start at 11 am, with an awards presentation at 2 pm. Pre-registration is \$25 through 5 pm on July 12th or \$30 the day of the show. This event is free for spectators.

*For more information, contact Jessica Norton at 620-276-6243.*

**JULY 15**

### **CASEY DONAHEW CONCERT**

The Casey Donahew concert featuring special guests Steven Bankey & The Flatland Band doors will open at 6 pm. Tickets are \$25 and can be purchased at [visitgck.com](http://visitgck.com).

**JULY 17-24**

### **2023 FINNEY COUNTY FAIR**

*For a list of all fair events, please go to [visitgck.com/things-to-do/finney-county-fair](http://visitgck.com/things-to-do/finney-county-fair).*



**AUGUST 17-24**

### **SOUTHWEST KANSAS PRO-AM**

The Southwest Kansas Pro-Am is the longest running professional golf tournament in Kansas. Every year, hundreds sign up to test their skills and mettle against the best golfers in the region, with big purses, big prizes, and endless glory to be won.

*For more information, please email [southwestksproam@gmail.com](mailto:southwestksproam@gmail.com).*

**SEPTEMBER 16**

### **FALL FESTIVAL**

From 9 am - 4 pm, Downtown Garden City is transformed into a marketplace filled with various merchants and delicious food options! Come enjoy shopping, activities and fun for the whole family! Plus, the Kansas Cruiser Car Show will be located in Stevens Park.

**OCTOBER 21**

### **BOO! AT THE ZOO**

The 28th annual "Boo! at the Zoo" offers children a fun, safe, trick-or-treat experience while supporting improvements at Lee Richardson Zoo. General Admission tickets are \$5 in advance and \$10 at the gate. Skeleton Key is \$15 for children age 3-12 and \$20 for adults. Children 2 and under are free. The fun kicks off at 4 pm!

*For more information contact Jessica Norton at 620-276-6243.*

**OCTOBER 28-29**

### **PEDDLER'S MARKET**

Come browse and shop the best in antiques, handmade crafts, collectables and baked goods. Market is open at 10 am - 6 pm on Saturday and 11 am - 4 pm on Sunday. Admission is free.

*For questions or to become a vendor, email Arlene Clark at [peddlersmarketgck@gmail.com](mailto:peddlersmarketgck@gmail.com).*



## Lodging Amenities

	# of Rooms	Pool	Hot Tub	Gym	Restaurant/Bar	Laundry on Site	Pet Friendly*	Large Recreational Vehicle Parking**
<b>AmericInn Lodge &amp; Suites</b> 3020 E Kansas Ave 620-272-9860 <i>americinn.com</i>	72	Indoor	•	•		•	•	•
<b>Americas Best Value</b> 1818 Commanche Dr 620-275-5095 <i>bestvalueinn.com</i>	76					•	•	•
<b>Best Western Plus Emerald Inn &amp; Suites</b> 2412 E Kansas Ave 620-277-7100 <i>bestwestern.com</i>	60	Indoor	•	•	•	•		•
<b>Clarion Inn &amp; Conference Center</b> 1911 E Kansas Ave 620-275-7471 <i>choicehotels.com</i>	109	Indoor	•	•	•	•	•	•
<b>Comfort Inn</b> 2608 E Kansas Ave 620-275-5800 <i>choicehotels.com</i>	62	Indoor	•	•		•	•	•
<b>Flamingo Hotel</b> 1612 Jones Ave 620-276-7601 <i>visitgck.com</i>	29							•
<b>Garden City Inn</b> 1202 W Kansas Ave 620-276-7608 <i>gardencityinnhotelkansas.com</i>	43	Indoor				•		•
<b>Hampton Inn</b> 2505 E CrestWay Dr 620-272-0454 <i>hilton.com</i>	83	Indoor		•		•		•

For a list of RV/Camping grounds go to [visitgck.com](http://visitgck.com).

\* Pet deposit or fee may apply. Please contact the hotel directly for this information.

\*\* This does not include large commercial vehicles or semis with large trailers. Please contact the lodging facility directly about these types of vehicle parking.





# FLAMINGO INN

1612 Buffalo Jones Ave, Garden City • [visitgck.com](http://visitgck.com) • (620) 276-7601



The mention of the Flamingo Inn evokes images of vibrant neon lights and a nostalgic ambiance reminiscent of the 1950s. The owners kept this in mind while they have owned and operated the Flamingo Inn for the past two decades. Rooms have been remodeled and updated in recent years while still keeping the charm and hospitality their guests have come to expect & love for many years. With daily, weekly, extended rates available, they will help make your stay comfortable and affordable. Flamingo Inn is a pet friendly property so you can travel with your favorite four-legged family members. The hotel also offers three and four bed guest rooms for larger families or groups.

They offer 24-hour friendly, bi-lingual staff that is ready to help with your every need. Parking is free and with parking directly in front of your room, it is easy to unload your vehicle after a long day on the road.

We invite you to come let them serve you and become part of the Flamingo family! You don't just have to take our word for it. Ruth Stieb gave Flamingo Inn a five out of five stars in her review and says "When I come here on business, I always stay at the Flamingo... Rooms are always clean, and the area is always quiet."

Timothy H. also gives the Flamingo Inn a five out of five stars. He says; "Clean, clean, clean...beds are very comfortable, very affordable and well lighted at night, only place I stay when in Garden City. Owners are very accommodating."

What are you waiting for? Book your room today and experience the hidden gem that is the Flamingo Inn.



# COMFORT INN

2608 E Kansas Ave, Garden City • [choicehotels.com](http://choicehotels.com) • (620) 275-5800

Why is Comfort Inn the right choice when traveling to Garden City? You will enjoy welcoming, spacious rooms, friendly staff and modern amenities you can count on. Whether you're staying for leisure or business travel, alone or with the family, Comfort Inn in Garden City offers travelers a consistent, warm and welcoming experience. With all the amenities you need to be at your best, Comfort Inn will help you feel rested and ready to take on the day.

With their ample amenities, friendly service and central location make the Comfort Inn an ideal spot for Garden City visitors. After a great night's rest on premium bedding, your day will get off to a great start with free hot breakfast, which includes plenty hearty and healthy options—and their famous waffles!

Looking for a hotel to host a family reunion? Comfort Inn is an ideal home base for your stay in Garden City Kansas. They feature more than 1,300 square feet of meeting space that can be customized to cater to your specific needs. Need more tables and chairs? More coffee? No need to worry because they have all the details covered allowing you to host your event with ease.

Experience extreme comfort at Comfort Inn in Garden City Kansas. Book your room today!



## Lodging Amenities

	# of Rooms	Pool	Hot Tub	Gym	Restaurant/Bar	Laundry on Site	Pet Friendly*	Large Recreational Vehicle Parking**
<b>Heritage Inn &amp; Suites</b> 1212 Stone Creek Drive 620-277-7477 <i>choicehotels.com</i>	95			•		•		•
<b>Holiday Inn &amp; Suites</b> 2502 E Kansas Ave 620-275-5900 <i>ihg.com</i>	69	Indoor	•	•		•	•	•
<b>Magnuson Red Baron Inn</b> 2205 E Fulton St 620-275-4164 <i>magnusonhotels.com</i>	65					•		•
<b>National 9 Inn</b> 123 Honeybee Court 620-275-0677 <i>national9inngardencityks.com</i>	34	Indoor						•
<b>New Sunflower Inn &amp; Suites</b> 1311 E Fulton St 620-276-2387 <i>visitgck.com</i>	107							•
<b>Sleep Inn</b> 1931 E Kansas Plaza 620-805-6535 <i>choicehotels.com</i>	60			•		•		•
<b>Sunnyland Bed &amp; Breakfast</b> 501 N 5th 620-276-0500 <i>sunnylandbandb.com</i>	7							•
<b>TownePlace Suites by Marriott</b> 3510 E Kansas Ave 620-805-6717 <i>marriott.com</i>	120	Outdoor		•		•	•	•

**For a list of RV/Camping grounds go to [visitgck.com](http://visitgck.com).**

\* Pet deposit or fee may apply. Please contact the hotel directly for this information.

\*\* This does not include large commercial vehicles or semis with large trailers. Please contact the lodging facility directly about these types of vehicle parking.



Central Cup Coffee House



Drink It Milk Tea House



Patrick Dugan's Coffee House

# BREWS CRUISE

*When it comes to exceptional choices for coffee, tea, a revitalizing afternoon treat, or an immersive brewery adventure, here are some of the finest selections offered in Garden City.*

## CENTRAL CUP COFFEE HOUSE

At Central Cup Coffee House, their mission is to deliver unparalleled service and exceptional products designed to empower you throughout your day. Step into their warm and inviting atmosphere, where you'll instantly feel at home. Central Cup's expertise lies in crafting outstanding coffee, espresso, smoothies, and teas. With a diverse range of offerings, they can accommodate various dietary preferences, including sugar-free, low-carb, and lactose-free options, ensuring there's something for everyone.

517 N 8th, Garden City, Kansas  
[centralcupcoffee.com](http://centralcupcoffee.com)

## DRINK IT MILK TEA HOUSE

Drink It is Garden City's best-loved boba tea shop. Come here to try some of the freshest, most creative drinks in Finney County. Whether you're looking for something light and fruity, or something that will leave your sugar receptors tingling, Drink It has you covered. And that's not all—they also offer rolled ice cream. Expect generous service, lots of smiles, and an experience you're going to want to repeat again and again.

3102 E Kansas Ave #200, Garden City, Kansas  
[milkteahousegardencity.com](http://milkteahousegardencity.com)

## **FLOURISH HERBALS & AROMATHERAPY**

Flourish carefully selects herbs and harmonizes flavors to bring you the utmost benefits in each cup, aiming to target the areas where your body requires support. Whether they create a custom blend for you to enjoy on-site or provide a bag for you to savor at home, Flourish ensures that every sip is designed to enhance your well-being. Experience the delightful taste of a healthier approach with Flourish!

*203 E Laurel St, Garden City, Kansas  
flourish-herbals.com*

## **HIDDEN TRAIL BREWING**

Hidden Trail is an ideal choice for families and well-mannered dog companions. With a range of arcade games, an abundance of board and card games and a foosball table, there's something for everyone. Additionally, their extensive range of in-house brewed beers adds to the appeal, making it the ultimate spot to unwind and have a great time!

*2010 E Shulman Ave, Garden City, Kansas  
hiddentrailbrewing.com*

## **PATRICK DUGAN'S COFFEE HOUSE**

Patrick Dungan's aim is to create a coffee house that embodies the comfort of your own living room, while providing exceptional coffee. From the very beginning, their focus has always been on delivering a coffee-forward tasting experience. Patrick Dungan's primarily serves PT's Coffee Roaster's Flying Monkey Espresso, along with a diverse selection of their blends and single origin coffees. In addition, they offer a range of teas, lattes, and cortados, catering to a variety of tastes.

*301 N Main St #5463, Garden City, Kansas  
patrickdugans.com*

## **ROOT'S JUICE CO. & WELLNESS STUDIO**

Root's presents a range of health-enhancing beverages and nourishing food options, curated to elevate your well-being. Discover the goodness of cold-pressed juices, as well as superfood smoothies, organic coffee and wellness teas. Roots has expanded its offerings to include a delectable selection of soups, superfood toasts, energy bite balls, hummus, and nut mixes, ensuring a wide variety of wholesome choices.

*216 N Main St, Garden City, Kansas  
rootsjuiceco.com*



*Hidden Trail Brewing*



*Flourish Herbals & Aromatherapy*



*Root's Juice Co. & Wellness Studio*



# RESTAURANTS

Applebee's Grill & Bar	3030 E Kansas Ave
Arbys	1719 E Kansas Plaza
Baron's Steakhouse & Bar	1911 E Kansas Ave
Baskin-Robbins	1521 E Fulton St; 2505 Fleming St
Buffalo Wild Wings	1530 Lareu St #100
Burger King	2415 E Kansas Ave; 1601 Taylor Plaza W
Casa Mariachi	125 W Pine St
Central Cup Coffee House	517 N 8th St
Cinnabon	2875 E Schulman Ave; 1265 Solar Ave
Crispy Donuts	511 W Kansas Ave
Dairy Queen	114 W Kansas Ave
Daylight Donuts	201 E Kansas Ave
Dominos	2312 E Kansas Ave Suite C
Dragon Express	1118 N Taylor Ave
Drink It Milk Tea House	3102 E Kansas Ave Suite 200
El Canelo Tacos Y Mariscos	1110 Campus Dr #6473
El Clamatazo	707 E Fulton St
El Patron	606 W Fulton St
El Rancho	305 N Main St, Holcomb
El Remedio	1005 E Fulton St
El Zarape	2501 E Fulton St
Escarchadas Y Escamochas	1804 E Kansas Ave Suite B
Flat Mountain Brewhouse	207 N Main St
Freddy's Frozen Custard	3112 E Kansas Ave
Garden Café/The Scoop	2703 North Taylor Plaza/US-83
Garden City Steak House	1301 E Fulton St
Golden Corral	1727 E Kansas Plaza
Hannah's Corner	2605 N Taylor Ave
International House of Pancakes	2507 Crestway Dr
Jax Sports Grille	1907 E Mary St
Jimmy Johns	501 E Kansas Ave
KFC	2208 E Kansas Ave
La Cabana	110 W Kansas Ave
La Estrella	305 E Kansas Ave

Motorcoach Parking?	Has Bar/ Lounge?	Accepts Group Reservations?	Free Wifi?	Price Range?	Has Additional Meeting/Event Space?
•	•	•	•	\$\$	
•				\$	
•	•	•	•	\$\$	•
				\$	
•	•	•	•	\$\$	
•			•	\$	
	•	•		\$\$	•
				\$	
•			•	\$	
				\$	
				\$	
•				\$	
				\$	
				\$	
				\$	
		•		\$	
				\$	
•	•	•		\$\$	•
				\$	
•				\$\$	
•				\$	
•		•		\$	•
	•	•		\$\$	•
•		•		\$\$	•
•		•		\$\$	•
•		•		\$\$	
	•	•		\$\$	
				\$	
				\$	
				\$	
				\$	



# RESTAURANTS CONT.

La Playa Dorada	212 W Fulton St B
Las Margaritas	1601 Buffalo Jones Ave
Little Ceasars	1810 E Kansas Ave
Long Johns Silvers Seafood	205 E Kansas Ave
Lovings Cakes	210 E Spruce St
Mariscos Puerto Nuevo	1107 N Taylor Ave
McDonalds	1613 E Kansas Plaza; 1106 N Taylor Ave
Napoli's Italian Restaurant	2204 E Kansas Ave Ste 5
Ninja Sushi	416 N Main St
Old Chicago	1010 Stone Creek Dr
Osaka Sushi & Steakhouse	1660 Lareu St
Papa Johns	1016 N Main St
Patrick Dugan's	301 N Main St #5463
Pho Hoa One	713 E Fulton St
Pinkys	2204 E Kansas Ave #1
Pizza Hut	1502 E Harding Ave #12; 301 E Kansas Ave
Plank's BBQ	912 E Fulton St
Popeyes Louisiana Kitchen	3108 E Kansas Ave
Randy's Donuts	1110 Fleming Street
Rib Crib	1750 Lareu St
Root's Juice Co. & Wellness Studio	216 N Main St
Scooter's Coffee	601 E Kansas Ave; 2517 Campus Dr
Sonic	1313 E Kansas Ave; 1212 Buffalo Jones Ave
Starbucks	2401 E Kansas Ave
Subway	3285 US-50; 1313 E Kansas Ave; 210 E Kansas Ave;
Subway	1320 N Taylor Plaza E; 3101 E Kansas Ave
Taco Bell	2408 E Kansas Ave
Tacos El Tapatio	1203 E Fulton St
Tequilas	2306 E Kansas Ave
Thai Arwan	902 E Fulton St
The Golf Club at Southwind	77 Grandview Dr
The Thirsty Dog	301 E Jones Ave, Holcomb
Time Out Sports Lounge & Grill	1319 N Taylor Ave
Traditions Soda & Sandwiches	121 Grant Ave
Wendy's	1403 E Kansas Ave



Motorcoach Parking?	Has Bar/Lounge?	Accepts Group Reservations?	Free Wifi?	Price Range?	Has Additional Meeting/Event Space?
				\$\$	
	•	•		\$\$	
				\$	
				\$	
				\$\$	
				\$	
•			•	\$	
•	•	•		\$\$	
		•		\$\$	
•	•	•		\$\$	
•		•		\$\$	
			•	\$	
		•		\$\$	
•		•		\$	
•		•		\$	•
•		•		\$\$	
•		•		\$	
•			•	\$	
•	•	•		\$\$	
•		•		\$\$	
•	•	•	•	\$\$	•
	•	•		\$	
•	•	•		\$\$	•
				\$	
•			•	\$	



# TRANSPORTATION

Garden City has many modes of transportation allowing you to further explore Garden City and Holcomb.

## AMTRAK

The Amtrak's Southwest Chief makes morning departures and evening arrivals in the heart of downtown Garden City! **For reservations or a schedule, call (800) 872-7245 or visit [amtrak.com/southwest-chief-train](http://amtrak.com/southwest-chief-train).**

## GARDEN CITY REGIONAL AIRPORT

The airport is located 7 miles east of Garden City on Highway 50. With access to the world through the Garden City Regional Airport and American Airlines, there are several flights arriving and departing for Dallas/Fort Worth daily. **For more information on flights and schedules, visit [fly2gck.com](http://fly2gck.com) or [aa.com](http://aa.com).**



## CITY LINK

Designed with the community in mind, City Links offers an affordable, reliable and convenient form of public transportation providing citizens of any age access to the entire city as well as a number of specified destinations outside the city limits. **For full route and fare information, visit [finneycountytransit.org/city-link](http://finneycountytransit.org/city-link).**

## TAXI SERVICE

If you prefer a taxi, you can contact our taxi company, Quality Cab. **There are two different locations and their numbers are (620) 275-8294 or (620) 276-3434.**

## RENTAL CARS



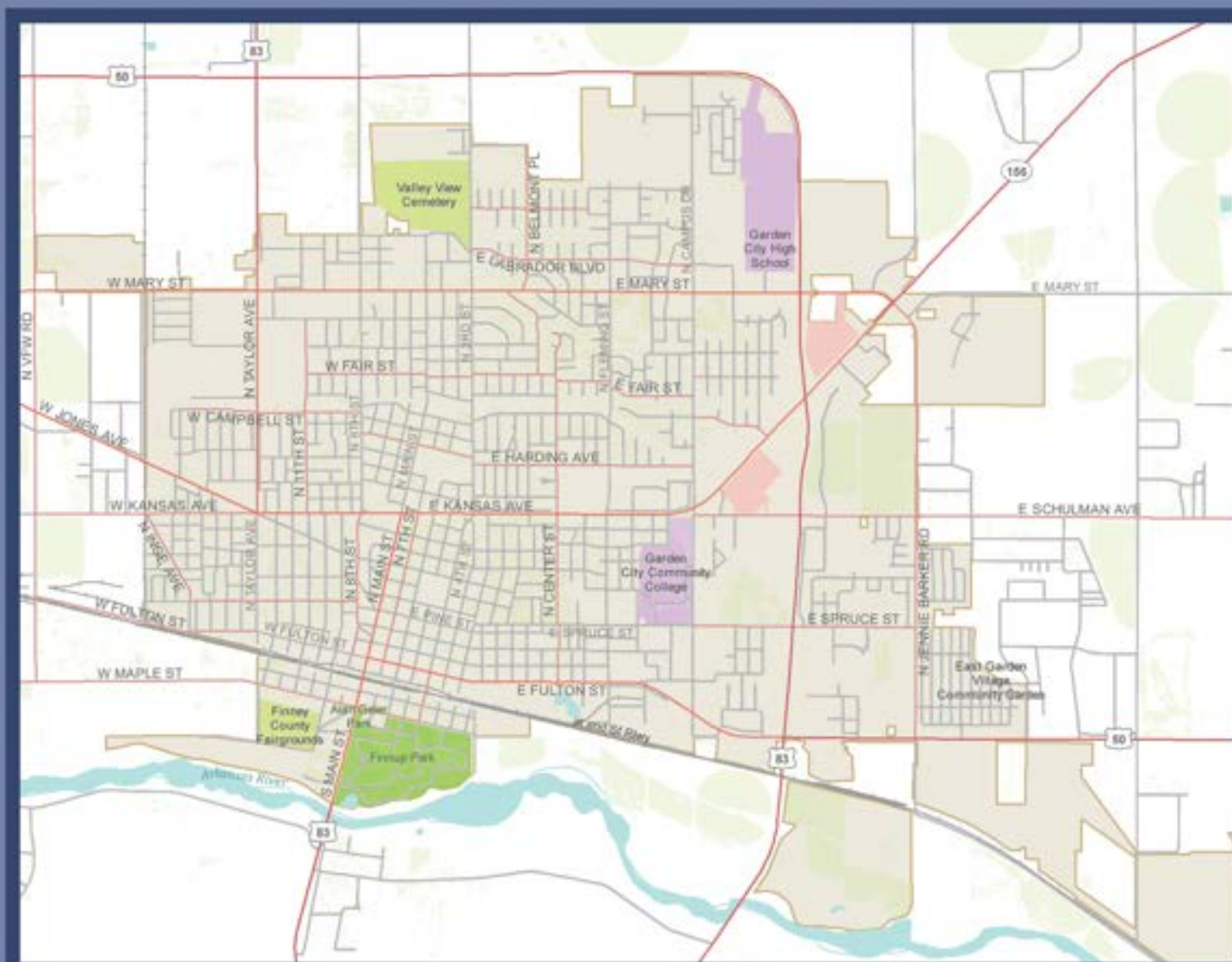
(620) 276-2113



(620)276-6884

## RELOCATION PACKETS

The Garden City Area Chamber of Commerce offers a Relocation Packet designed to help those interested in relocating to our area make a smooth transition. Filled with valuable information, the relocation packet offers information on local tourist attractions, housing and rental properties, area businesses and so much more. *For more information or to request a packet go to [gardencitychamber.net/pages/RequestaRelocationPacket](http://gardencitychamber.net/pages/RequestaRelocationPacket) or contact the Garden City Chamber of Commerce at (620) 276-3264.*

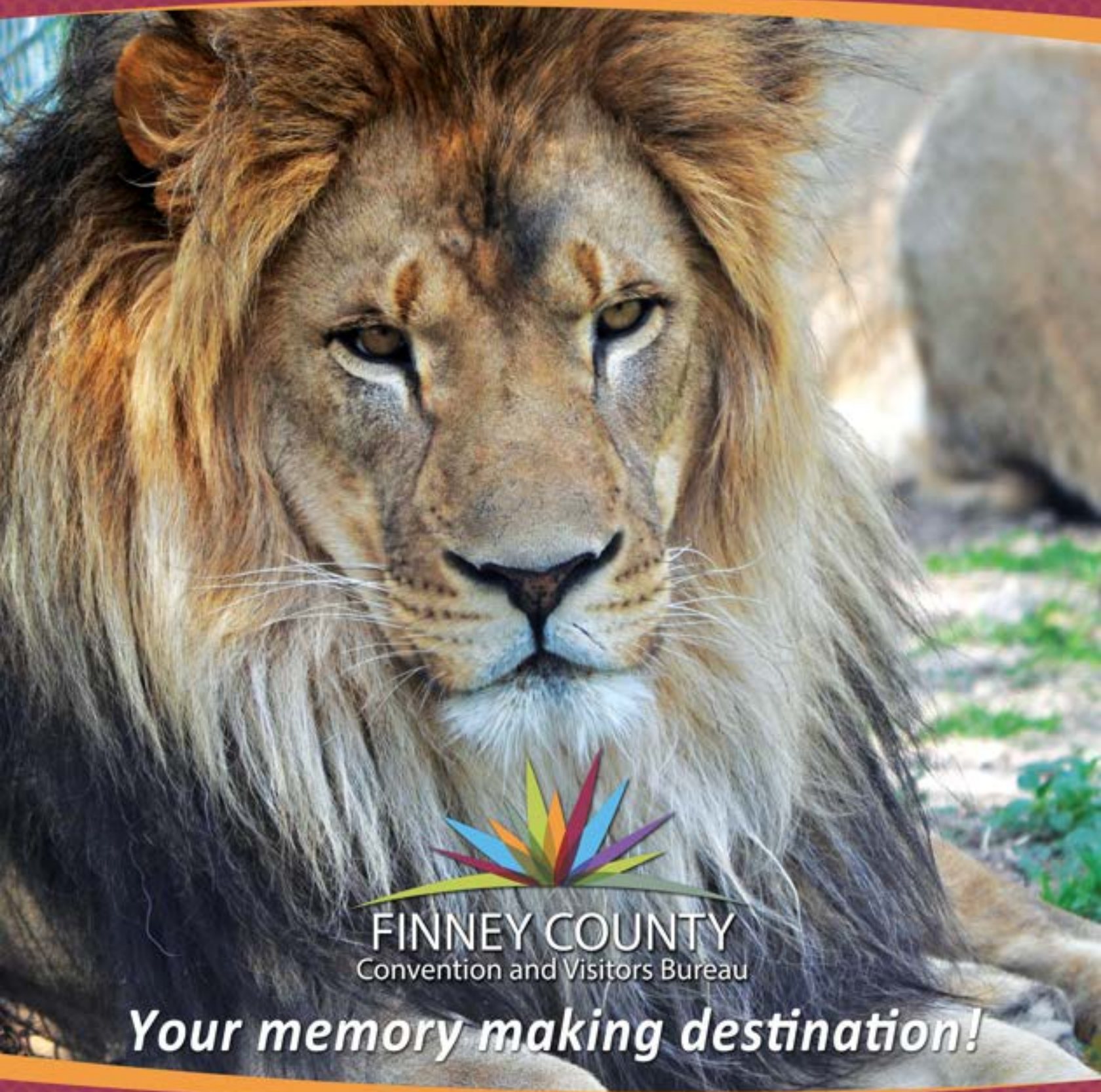


**FOR MORE INFORMATION ON OUR WALKING OR DRIVING TOURS VISIT:**

[visitgck.com/things-to-do/walking-tours](http://visitgck.com/things-to-do/walking-tours)

[visitgck.com/things-to-do/driving-tours](http://visitgck.com/things-to-do/driving-tours)

*Plan a trip. Schedule an event. Book an adventure.*



***Your memory making destination!***

***visitgck.com***  
*Garden City, Kansas*